

INDEX TO PAGES 35-158

- Acknowledgements, 39
- Anlaf, moneyers of who worked for Athelstan, 83, 87, 89, 94
- Archiepiscopal coinage, possible, 64, 91, 114
 - at Canterbury, 64
 - at York, 91
- Athelstan, accession of, 55
 - events of reign of, 40
 - regnal style of, 55
 - see also *passim*
- Background, 40
- Bibliography, 59
- 'Church', motif on coins of York mint, 89
- Civitas*, mints described as, 45, 115
- Coins, unlocated, 104
- Conclusions, 114
- Contents, 37
- Continent, coins of English type struck on, 112
 - coins of in Forum hoard, 155
- Cut coins, not known, 115
- Dating, 55
- Die-linkage, group of coins showing, 86
- Dor*, mint signature, 64
- East Anglia, coinage of, 80
- Eastern England, coins struck in, 83
- Ebro*, mint signature, 87
- Edward the Elder, coins with name of perhaps struck posthumously, 80
- Forster, William, coins in collection of, 156
- Grateley decrees, 40
- Hantun*, mint signature, 71
- Hoard evidence, 51
- Hoards, individual:
 - An early unrecorded, 86
 - Chester (1950), Cheshire, 55
 - Forum, see Rome (Forum)
 - 'Ireland 1862', 54
 - Killyon Manor, Meath, Ireland, 54
 - Morley St. Peter, Norfolk, 54, 80
 - Rome (1846), Italy, 54
 - Rome (Forum), Italy, 51
 - — listed, 141
 - Rome (Vatican), Italy, 54, 105
 - Scotby, Cumberland, 54, 156
 - 'Sicily', Italy, 55
 - Skye, Inverness-shire, 54, 113
 - table of, 52
- Ingots, 156
- Introduction, 39
- Irregular issues, 106
 - dating of, 113
- List of coins, 117
 - collections referred to in, 117
 - by mints, 133
 - by moneyers, 134
 - by types, 119
- Marinus II, Pope, fibulae with name of, 141
- Mercia, coins struck in, 93
 - Midland group of coins of, 93
 - North Western group of coins of, 97
 - Western Marches group of coins of, 103
- Mints, groupings of, 44
 - individual:
 - Bath, 74
 - Bredy, or Bridport, 74
 - Bridgnorth, coins reattributed from, 74
 - Bridport, or Bredy, 74
 - Canterbury, 64
 - possible archiepiscopal coinage at, 64
 - Chester, 97
 - irregular coins with mint signature of, 110
 - moneyers of possibly lent for establishment of other mints, 93, 96
 - Chichester, 73
 - 'Darent', 75
 - possible sites of, 75
 - Derby, 93
 - irregular coins with mint signature of, 108
 - moneyers possibly lent to from Chester, 93
 - Dorchester, coins not at present attributable to, 74
 - Dover, 76
 - Exeter, 69
 - Gloucester, 103
 - Hastings, 41
 - Hereford, 104
 - Hertford, 76
 - Langport, 77
 - Leicester, 96
 - Lewes, 70
 - Lincoln, possible mint, 88
 - London, 62
 - irregular coins with mint signature of, 108
 - Lymne, 77
 - Maldon, 78
 - Northampton, coins not attributable to, 72
 - Norwich, 80
 - Nottingham, 95
 - moneyer possibly lent to from Chester, 96
 - Oxford, 66

Mints, individual (*cont.*):

- Rochester, 69
- Shaftesbury, 70
- Shrewsbury, 99
- irregular coins with mint signature of, 110
- 'Smriert', 78
- Southampton, 71
- Stafford, 100
- Stamford, coins not likely to be of, 100
- Stockbridge, attribution of coins to rejected, 75
- Tamworth, 96
- Thelwall?, 101
- Totnes, possible site of 'Darent', 75
- Wallingford, 72
- Wareham, 73
- irregular coins with mint signature of, 108
- Warwick?, 102
- 'Weardburh', 103
- Winchester, 65
- irregular coins with mint signature of, 110
- Worcester, possibility of mint at, 102
- York, 88
- mint signatures of, 87
- monopoly of coinage at by one moneyer, 89
- possible archiepiscopal coinage at, 91
- maps of, by number of moneyers, 43
- — by types, 42
- mentioned in Grateley decrees, 41
- status of, 45

Moneyers, continental flavour of names of, 82

- listed, 134

- names of two on same coin, 86, 96, 111
- Mules, 48

- North Eastern I grouping, 81
- North Eastern II grouping, 83
- North Eastern III grouping, 85

- Obverse dies, coins struck from two, 110
- Overstrike, 51

- Penny, value of, 115

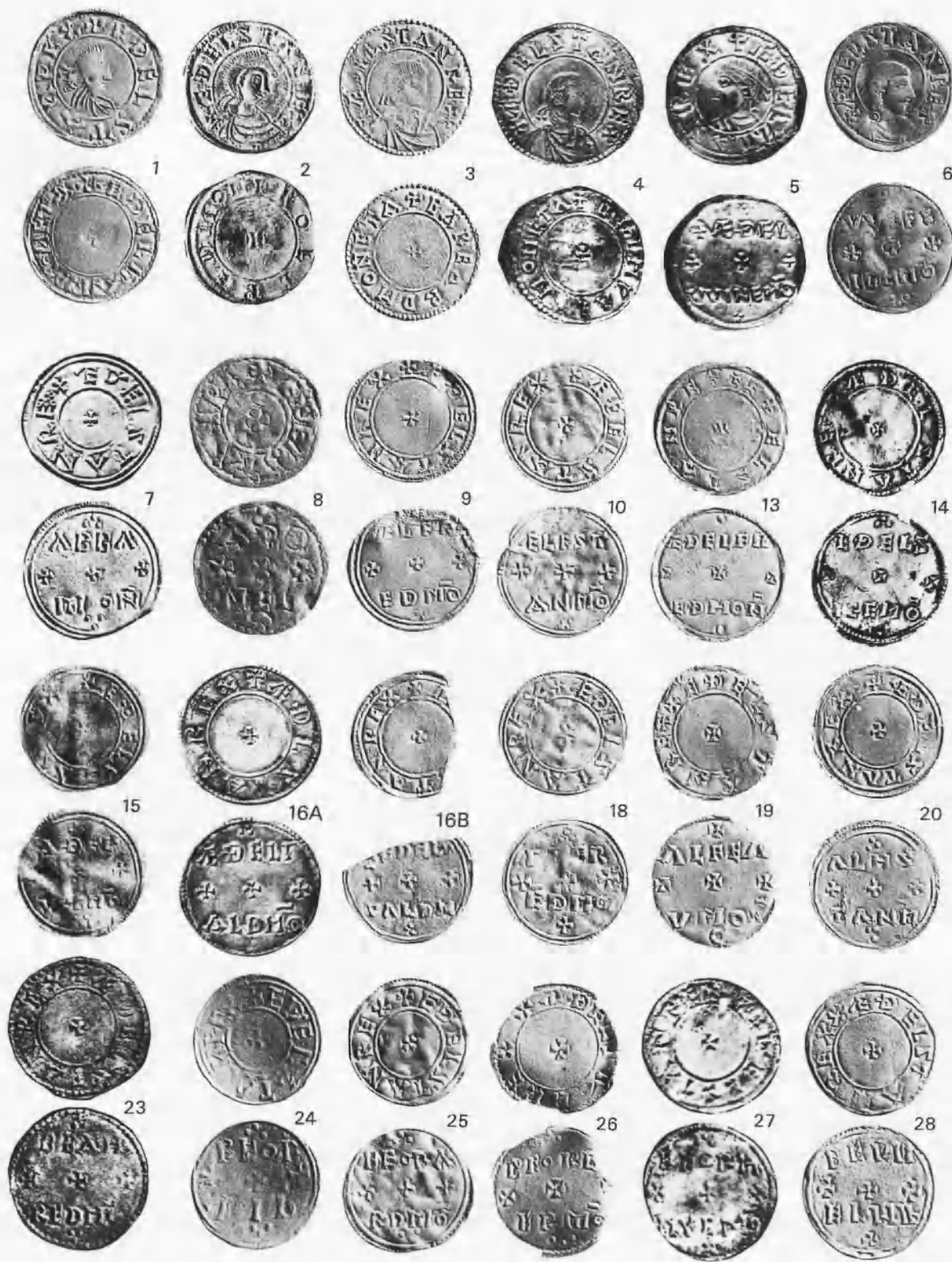
- Regional basis of coinage, 114
- Reverse dies, coins struck from two, 92, 96
- Rex Britanniae*, style, 103
- Rex Saxorum*, style, 93
- Rex totius Britanniae*, style, 55

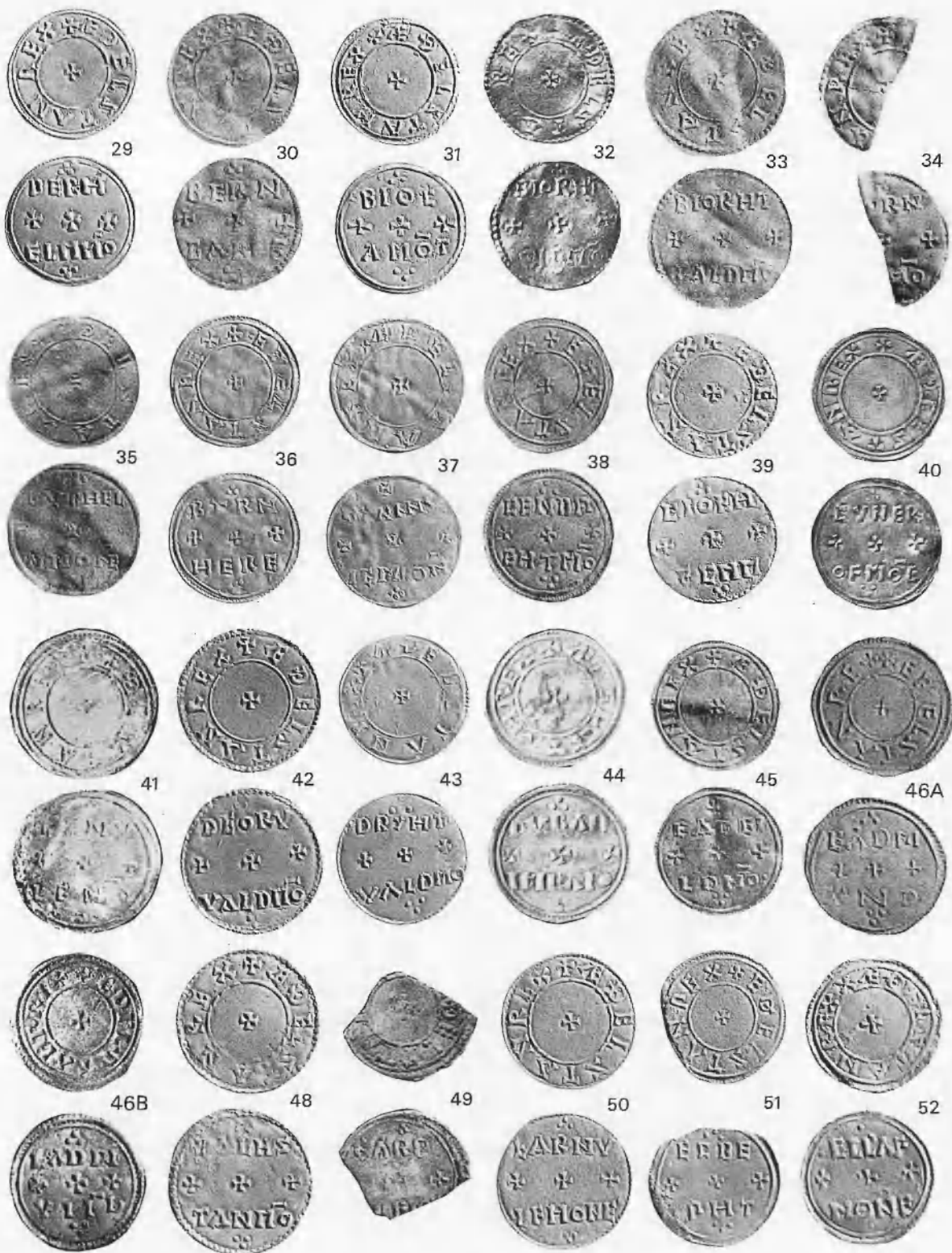
- St. Peter coinage, dating of, 90
- Saints, names of in mint signatures, 79
- Southern group of coins, 61
- Styles, 45

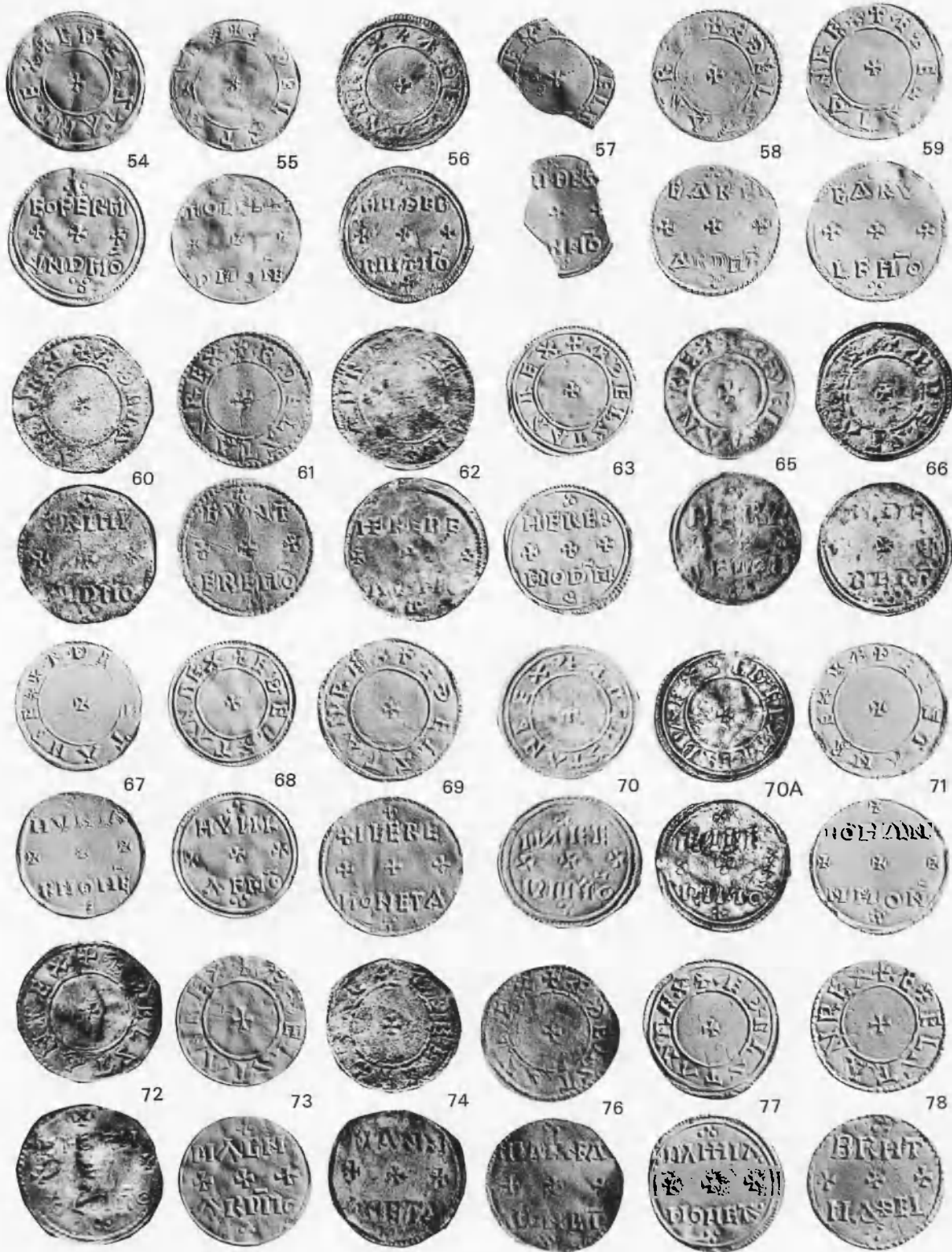
- To*, preposition, use of, 77
- Types, 46

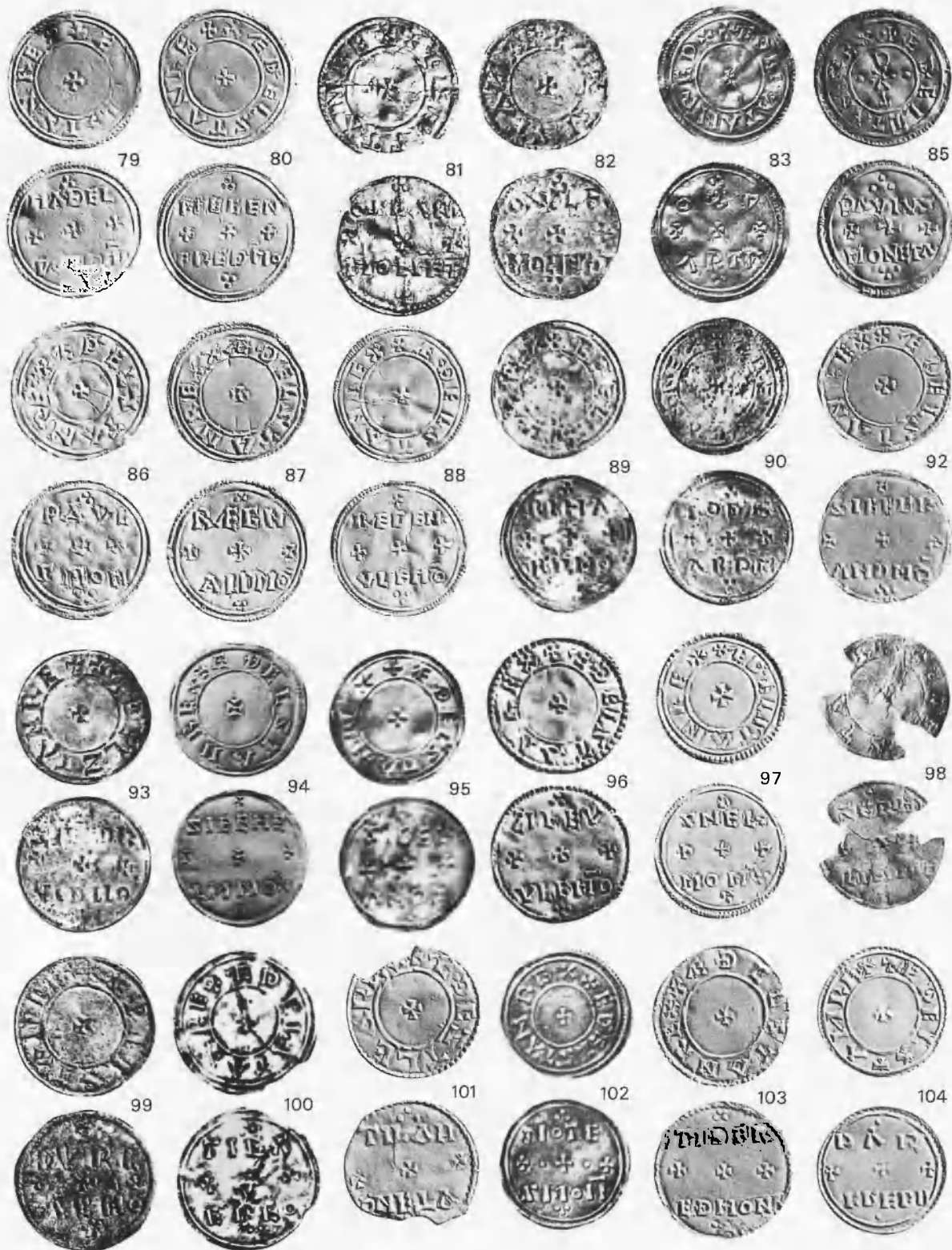
- Unlocated coins, 104
- Urbs*, mints described as, 45, 115

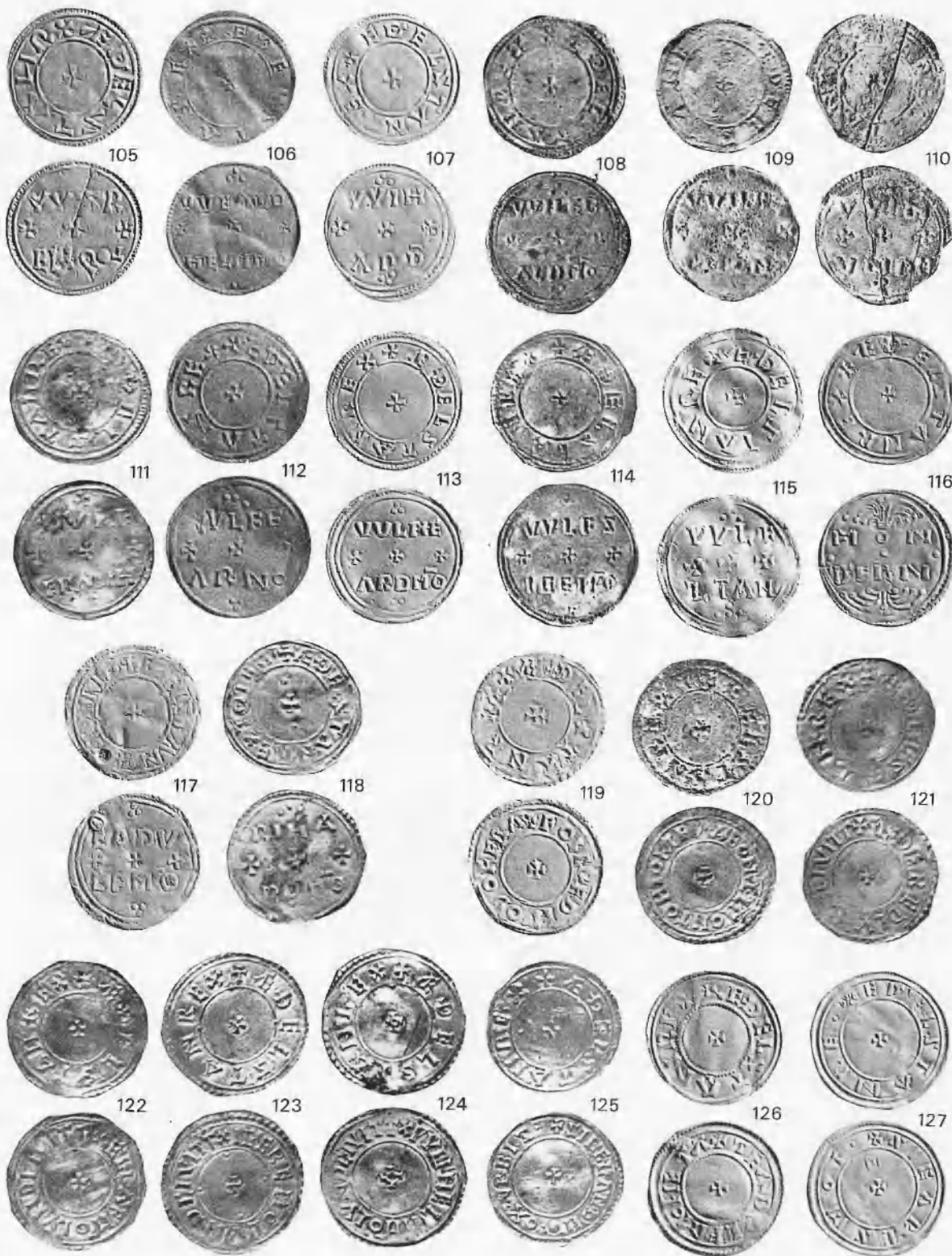
- Weights of coins, 58
- William Longsword, coin attributed to, 112



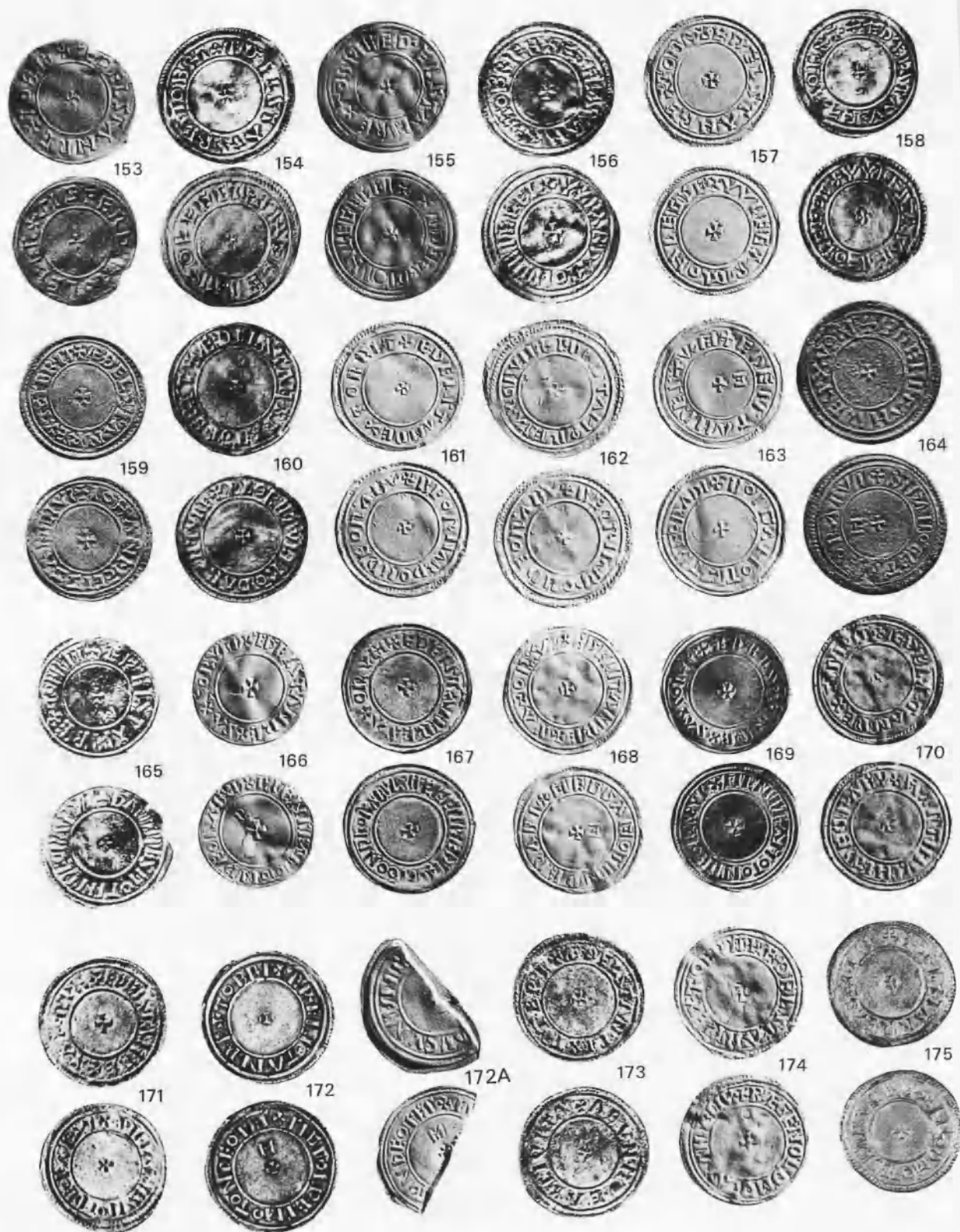






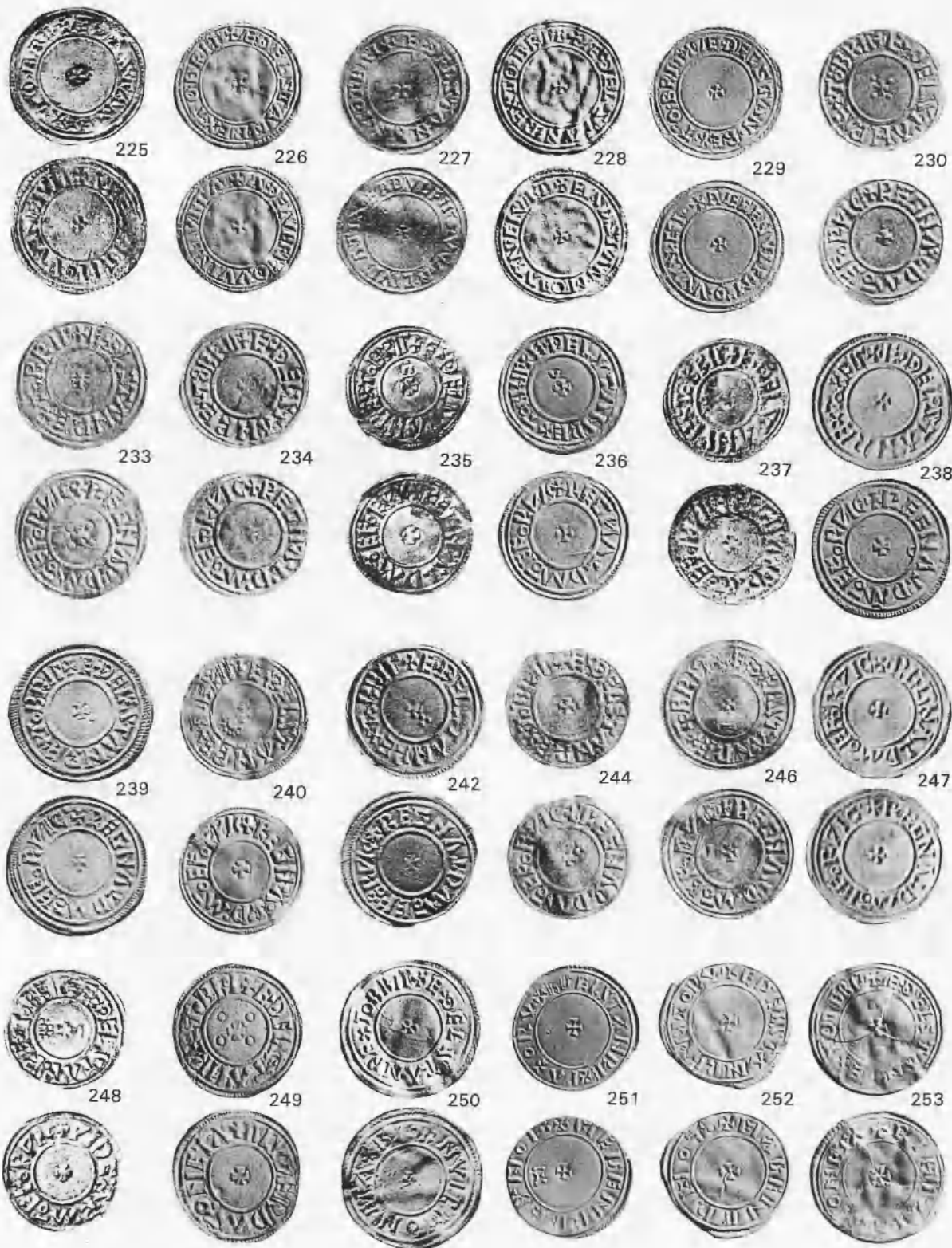


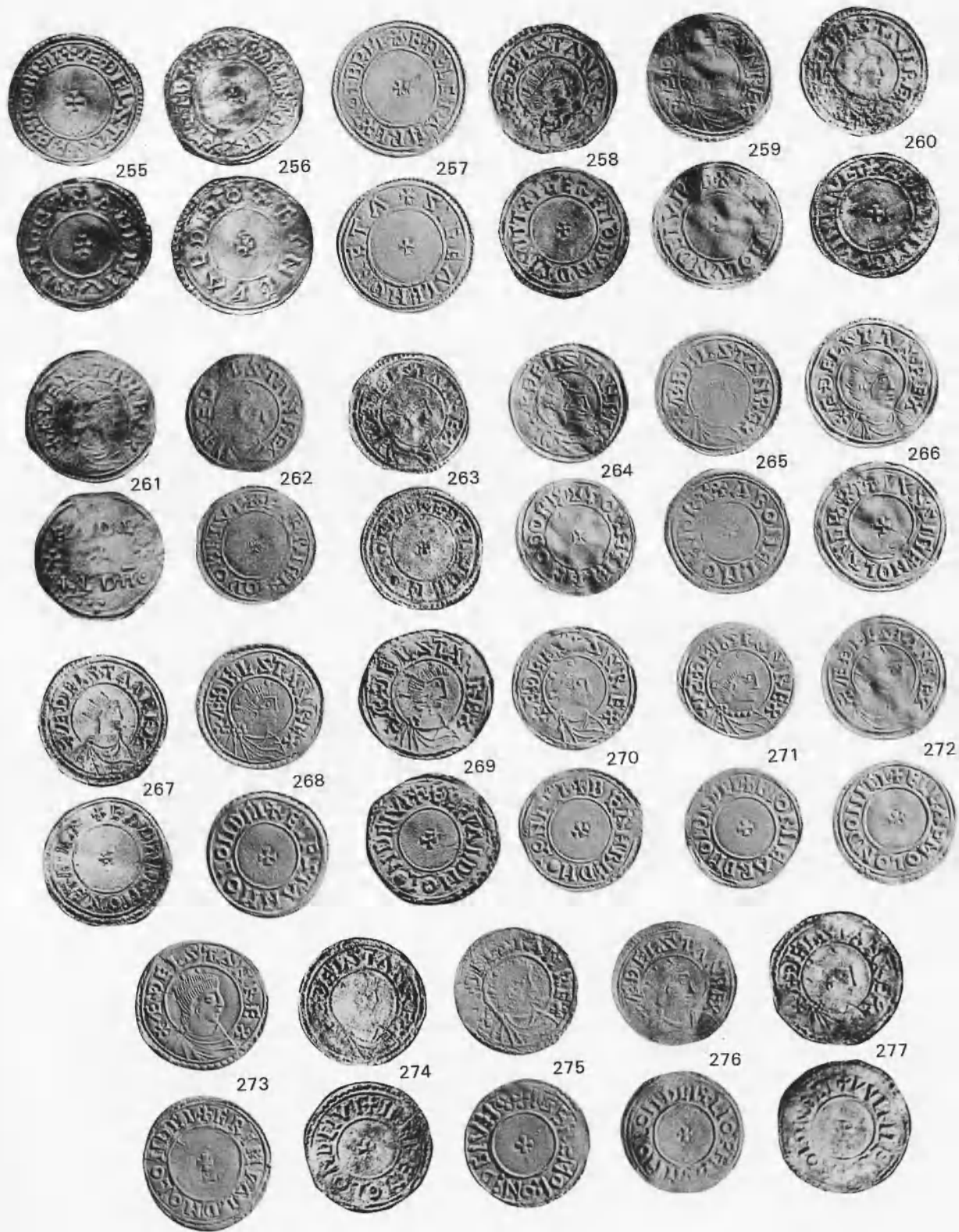
















302



303



304



305



306



307



308



309



310



311



312



313



314



315



316



317



318



319



320



321



322



323



324



325







350



351



352



353



354



355



356



357



358



359



360



361



362



363



364



365



366



367



368



369





370



371



372



373



374



375



376



377



378



379



380



381



382



383



384



385



386



387



388





389



390A



391



392



393



394



395



396



397



398



399



400



403



404



405



406



407



408





409



410



411



412



413



414



415



416



417



419



420



421



422



423



424



425



426





427



428



429



430



431



432



433



434



435



436



437



438



439



440



441



442

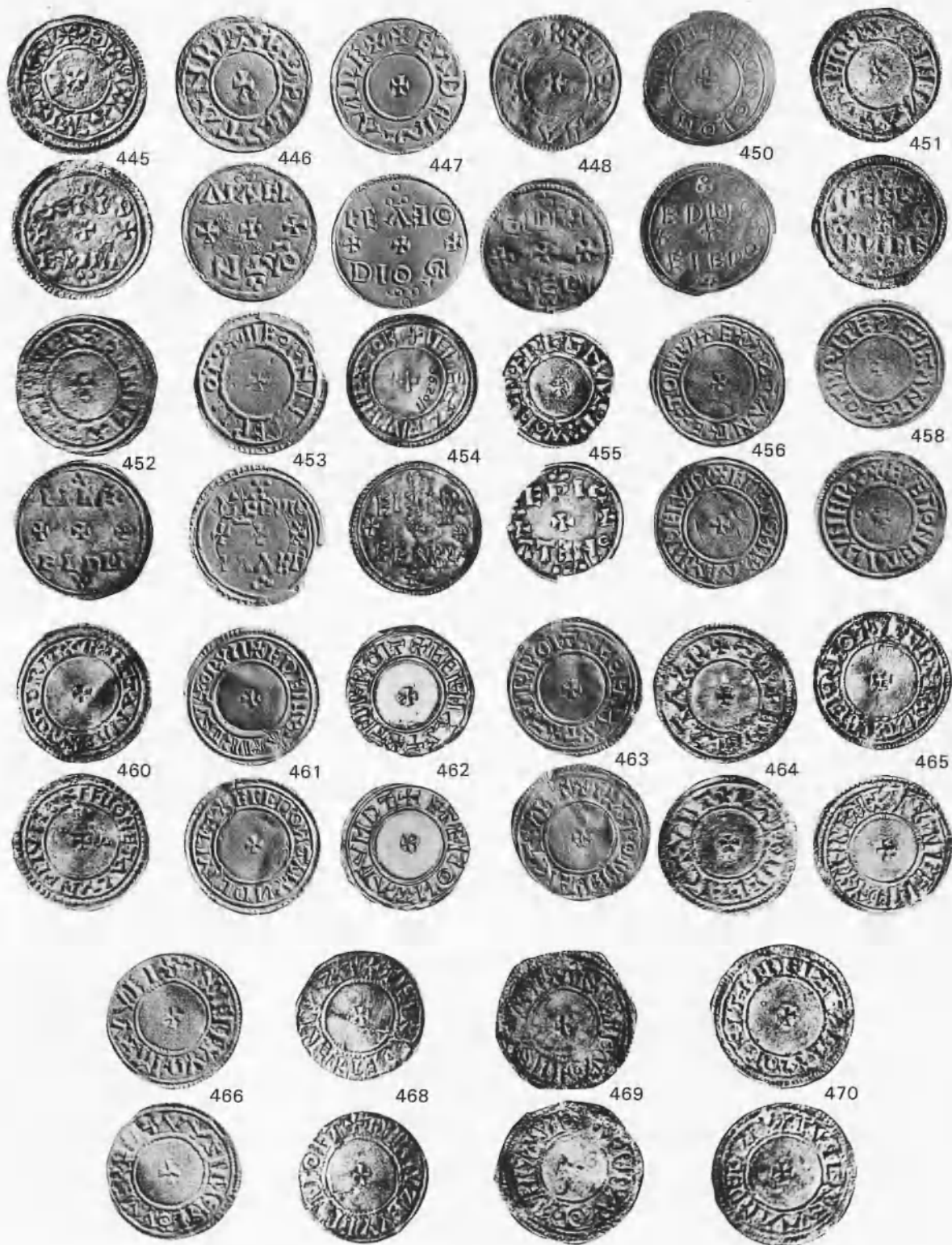


443



444







473



474



475



476



477



479



480



481



482



483



484



485



486



487



488



489



490



491



492



493



494



495





496



497



498A



498B



499



500



501A



501B



502



503



504



505



506



507



508



509



510



511



