

MISCELLANEA

'A NEW TYPE' FOR BURGRED

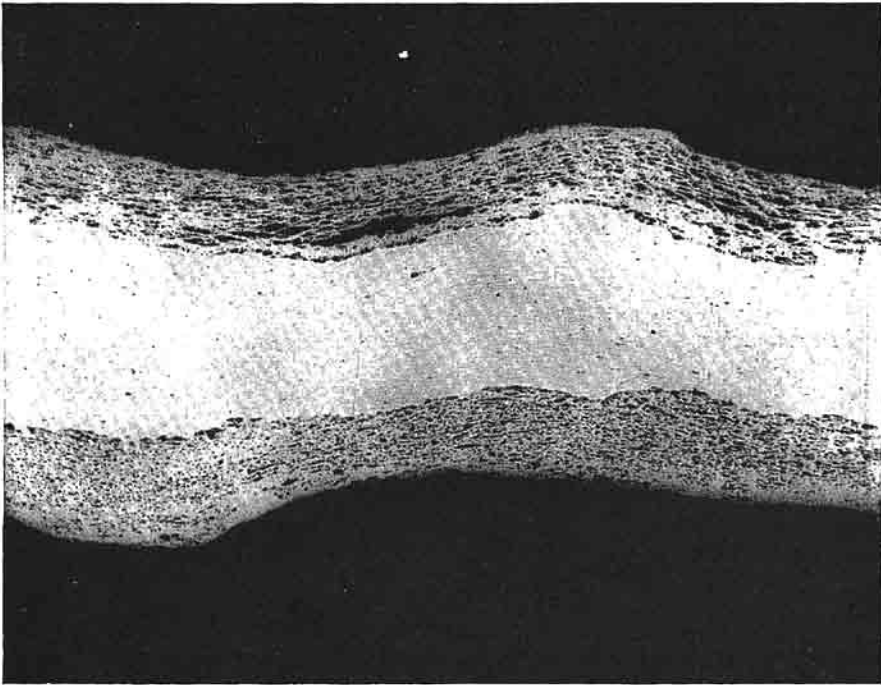
IN vol. xxix of the *Journal* (pp. 10-11) I illustrated what I described as a new type for Burgred with on the reverse two M-like objects at top and bottom of the coin. I was not aware at that time that a similar coin, though by a different moneyer, had been published by Mr. E. Prawdzic-Golemberski in the *Annual Report of the Peverel Archaeological Group* for 1955. Through his courtesy and that of the Peverel Archaeological Group, I am now permitted to record here this latter specimen which was found during excavations at Stoke Bardolph, Notts., in 1955. The obverse is of the

normal Burgred type and omits the Mercian title. The reverse reads ECCVLFF MON ETA. Ecgulf, though not recorded as a moneyer for this reign in *BMC*, has since that publication been added to the National Collection (BMA 143).

It is now possible to record a third specimen of this type. A second coin by the moneyer Cenred has recently turned up, from different dies from the one previously recorded, and this has now been added to the National Collection.

C. E. BLUNT

A CONTEMPORARY FORGERY OF EADGAR



A COIN of Eadgar by the moneyer Heriger (*BMC* type I) was recently submitted to the Royal Mint by Mr. R. H. M. Dolley on behalf of Dr. E. J. Harris for metallographic examination.

The coin was sectioned and a study made of the transverse structure. The accompanying photomicrograph (magnified about 70 times) shows that the coin consists of two distinct types of material arranged in sandwich fashion, the outer layers

being readily distinguished from the central core by their darker spotted appearance.

It was noted that the boundaries between the different layers follow approximately the contours of the coin; this together with the elongated grains of the outer layer indicate quite clearly that the coin was struck from a plated flan.

G. P. WARDEN