

A HOARD OF CARAUSIUS AND ALLECTUS FROM BURTON LATIMER

ROGER BLAND

THE hoard was found by Mr W. D. Evans at Burton Latimer, Northamptonshire, in December 1954.¹ The list published below gives details of 108 pieces of which all but two were examined in Northampton Museum in 1984.² These may be summarized as follows:

	<i>Gallic Mint</i>	<i>London</i>	<i>'C' Mint</i>	<i>Unmarked</i>	<i>Total</i>
Victorinus	1	—	—	—	1
Carausius	—	30	25	3	58
Carausius for Diocletian	—	1	—	—	1
Allectus	—	31	17	—	48

The hoard was said originally to have consisted of between 124 and 140 coins and was found in association with a number of sherds of third- and fourth-century black and grey ware, two tesserae and parts of bricks and roofing tiles and pieces of slag. The fine state of preservation of the coins makes them important for establishing the weight standards of the issues of Carausius and Allectus. Unfortunately, it was not possible to weigh the coins but Lawrence Cope had done so and he included two histograms of the weights in his thesis;³ these are reproduced here (Fig. 1). As Cope pointed out, it is noticeable that the British weight standard of seventy-two coins to a Roman pound⁴ was higher than that used by Diocletian and Maximian (eighty-four to a pound).

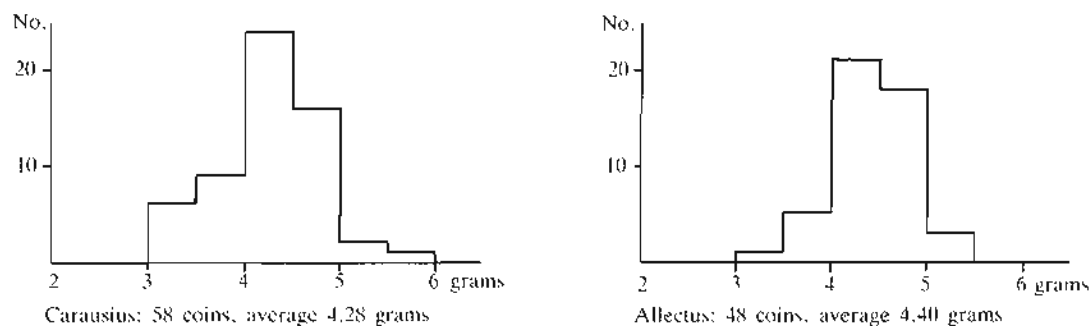


FIG. 1 Weight distributions of coins in Burton Latimer hoard (after Cope).

The closest parallel to this hoard is the Colchester hoard,⁵ inasmuch as both belong to the class of deposit which virtually exclude Allectan 'quinarii', the unmarked antoniniani of Carausius (which contain no silver⁶), and antoniniani struck before Aurelian's reform.⁷

¹ *Kettering Leader and Guardian*, 31/12/1954.

² Description of the two pieces that I did not see are taken from a MS list of the hoard in Northampton Museum. I would like to thank Mr W. R. G. Moore for allowing me to study the hoard, and my colleague Andrew Burnett for much help in this task.

³ L. H. Cope, 'The metallurgical development of the Roman Imperial coinage during the first three centuries AD', Liverpool Polytechnic 1974 (unpublished thesis), p.

187.

⁴ Carausius and Allectus used the same standard for their gold issues.

⁵ *NC* 1930, 173-98. Some of these coins were subsequently acquired by the BM, and a great many passed to the Ashmolean from the Evans collection.

⁶ Cope, p. 188.

⁷ See above, p. 27.

It is a hoard, then, which consists almost exclusively of those higher denomination coins that were then current. It has been suggested by Andrew Burnett elsewhere in this volume⁸ that Allectus's 'quinarii' were contemporary with some at least of his antoniniani, in which case their absence here would not be chronologically significant. Consequently, since the hoard contained all the issues of antoniniani, its deposition can be dated to the end of Allectus's reign, in 295 (or 296).⁹

CATALOGUE

The following obverse bust codes are employed:

- B1 Bust, radiate, cuirassed, seen from the front, right.
- D1 Bust, radiate, draped and cuirassed, seen from the front, right.
- D2 Bust, radiate, draped and cuirassed, seen from behind, right.
- Z Bust uncertain.

An asterisk after the catalogue number refers to a note at the end of the catalogue. All coins, except Nos. 1, 32 and 56, are illustrated.

VICTORINUS

Mint 1

No.	Reverse	Mint mark	Bust	Die-axis	Reference
	<i>Obv.</i> IMP C PIAV VICTORINVS PF AVG				
1.	PAX AVG		D1	6	<i>Elmer</i> 649

CARAUSIUS

London Mint

No.	Reverse	Mint mark	Bust	Die-axis	Reference
	<i>Obv.</i> IMP CARAVSIVS PF AVG				
2*	FORTVNA AVG	L-/ML	D1	7	<i>RIC</i> 37 var.
3.	PAX AVG vertical sceptre	F/O/ML	"	12	101
4.	" " " "	F/O/ML	"	5	"
5.	" " " "	"	"	6	"
6.	" " " "	"	"	6	"
7.	" " transverse sceptre	"	"	12	121
8.	" " " "	"	"	5	"
9.	MARTI PACIF	B/E/MLXXI	D1	12	90
10.	PAX AVG vertical sceptre	"	"	12	101
11.	" " " "	B/E/ML[XXI]	"	12	"
12.	" " " "	B/E/MLXXI	"	6	"
13.	" " " "	B/E/MLXXI	B1 or D1	12	"
14.	" " transverse sceptre	B/E/MLXXI	B1	11	121
15.	" " " "	"	Z	6	"
	<i>Obv.</i> IMP C CARAVSIVS PF AVG (variants given in notes)				
16.	PAX AVG vertical sceptre	B/E/MLX[XI]	B1	7	98
17.	" " " "	B/E/ML[XXI]	D1	6	"
18.	" " " "	B/E/MLXXI	"	7	"
19.	" " " "	B/E/MLX[XI]	"	6	"
20.	" " transverse sceptre	B/E/MLXXI	B1 or D1	12	118

⁸ See above, p. 28

⁹ For a discussion of the date of Allectus's defeat, see above, p. 21.

No.	Reverse	Mint mark	Bust	Die-axis	Reference
					<i>RIC</i>
21.	PAX AVGGG vertical sceptre	S-/MLXXI	D1	7	cf. 141
22.	" " " "	S/P/MLXXI	B1	6	141
23.	" " transverse sceptre	"	D1	6	143
24.*	" " " "	"	"	6	"
	<i>Obv.</i> IMP C DIOCLETIANVS PF AVG				
25.	PAX AVGGG vertical sceptre	S/P/MLXXI	B1	6	cf. 5
	<i>Obv.</i> IMP C CARAVSIVS PF AVG				
26.	PAX AVG vertical sceptre	S/P/MLXXI	D1	12	cf. 98
27.	" " " "	"	"	7	"
28.	" " " "	"	"	6	"
29.	" " " "	"	"	7	"
30.	SALVS AVG	"	"	6	cf. 154
31.	PAX AVG transverse sceptre	S/P/ML	D1	6	118
32.†	" " ? sceptre	"	Z	?	98/118

*'C' Mint**Obv.* IMP CARAVSIVS PF AVG (variants given in notes)

33.	APOLLINI CON	-I/C	D1	6.30	193
34.*	LAETIT AVG	"	"	7	250
35.*	SPES PVBLIC	"	"	6	411-7 var.
36.*	TEMP FELIC	"	"	6	-
37.	SALVS AVG	-I/CXXI	D1	7	401
38.*	SA[LVS AV]G	S/C/	D1	6	519
39.†	PAX AVG vertical sceptre	S/P/	D1	7	482
40.	" " " "	"	D1	7	475
41.	" " " "	"	D1	7	"
42.	" " " "	"	"	6	"
43.	" " " "	"	"	6	"
44.	" " " "	"	"	6	"
45.	PROVID AVG	"	"	6	502
46.	PAX AVGGG vertical sceptre	S/P/C	D1	6	334
47.*	" " " "	"	"	6	335
48.*	" " transverse sceptre	"	"	6	339
49.*	PROVID AVGGG	"	"	6	371-2 var.
50.*	" " " "	"	"	7	367
51.†	TEMPORVM FELIC	"	"	6	421 var.
52.	PAX AVG vertical sceptre	S/P/C	D1	7	300
53.*	" " " "	"	"	6	302
54.*	" " " "	"	"	6	310
55.*	" " transverse sceptre	"	"	7	321
56.*	" " ? sceptre	"	Z	?	?
57.	PROVID AVG	"	D1	6	357

*Unmarked issues**Obv.* IMP CARAVSIVS PF AVG

58.*	MONITA AV[G]		D1	7	855 var.
------	--------------	--	----	---	----------

Obv. IMP CARAVSIVS P AVG

59.	PAX AVG vertical sceptre		D1	6	881
-----	--------------------------	--	----	---	-----

No.	Reverse	Mint mark	Bust	Die-axis	Reference
	<i>Obv.</i> IMP C CARAVSIVS P A[. .]				
60.	P[AX A]VG vertical sceptre		Z	6	RIC cf. 879

ALLECTUS
London Mint

Obv. IMP C ALLECTVS PF AVG

					RIC	Burnett
61.	PAX AVG vertical sceptre	S/P//ML	B1	7	28	15
62.	" " transverse sceptre	"	"	12	33	11
63.	" " " "	"	"	12	"	"
64.	" " " "	"	"	6	"	"
65.	" " " "	"	"	12	"	"
66.	" " " "	"	B1/D1	6	"	11/12
67.	PROVID AVG	"	B1	6	35	19
68.	" " " "	"	B1/D1	6	"	"
69.*	VIRTVS AVG	"	B1	6	49	28
70.	COMES AVG	S/A//ML	B1	6	cf.17	30
71.	PAX AVG transverse sceptre	"	D2	6	33	46
72.	" " " "	"	"	6	"	"
73.	" " " "	"	"	1	"	"
74.	" " " "	"	D1	12	"	45
75.	" " " "	"	B1	12	"	44
76.	" " " "	"	"	1	"	"
77.	" " " "	"	"	12	"	"
78.	" " " "	"	"	12	"	"
79.	LAETITIA AVG	S/A//ML	D2	6	22	38
80.	" " " "	"	B1	7	"	"
81.	PROVID AVG	"	"	12	35	61
82.	" " " "	"	"	11	"	"
83.	PROVIDENTIA AVG	"	"	6	36	64
84.	SALVS AVG	"	"	6	43	78
85.	LAETITIA AVG	S/A//MSL	D2	6	22	96
86.	" " " "	"	B1	6	"	93
87.	" " " "	"	"	6	"	"
88.	" " " "	"	"	6	"	"
89.	" " " "	"	"	6	"	"
90.	" " " "	"	"	6	"	"
91.	PROVIDENTIA AVG	"	"	12	36	100

'C' Mint

Obv. IMP C ALLECTVS PF AVG (variants given in notes)

92.*	FIDES MILITVM	S/P//C	B1	6	69	126
93.	IOVI CONSE	"	D1	6	72 var.	131
94.	LAETITIA AVG	"	B1	6	79	133
95.	" " " "	"	B1	7	"	"
96.*	PAX AVG vertical sceptre	"	D1	6	85	155
97.*	" " transverse sceptre	"	"	7	90 var.	150
98.	PROVIDENTIA AVG	"	B1	6	105	178
99.	" " " "	"	"	6	"	"
100.	" " " "	"	"	6	108	168
101.	" " " "	"	"	6	"	"
102.	" " " "	"	"	6	"	"
103.	" " " "	"	"	6	111	173
104.	PROVID AVG	"	D1	6	97	162

No.	Reverse	Mint mark	Bust	Die-axis	Reference	
					RIC	Burnett
105.*	PROVID AVG	S/P//C	D1	6	98	163
106.*	SALVS AVG	"	"	6	-	185
107.	LETITIA AVG	S/P//CL	B1	6	79	203
108.	PROVIDENTIA AVG	"	"	6	108	204

Notes to the catalogue

2. Fortuna stg. l., holding rudder and cornucopiae (not baton as *RIC* states).
24. *Obv.* reads [. . .] CARAVSIUS PF AVG.
32. This coin was not seen in 1984; its description is taken from a MS list in Northampton Museum. The *obv.* is not described but is inferred from the mint-mark.
34. Laetitia stg. l., holding wreath and anchor.
35. Spes walking l., holding flower and raising robe.
36. Felicitas stg. l., holding long vertical caduceus and cornucopiae. *Obv.* reads IMP CARAVSIUS P AVG.
38. *Obv.* IMP C CARAVSIUS P AVG.
39. *Obv.* IMP C CARAVSIUS PF I AVG.
- 47-48. *Obv.* IMP C CARAVSIUS P AVG.
49. Providentia stg. l., holding globe and transverse sceptre.
50. Providentia stg. l., holding globe and cornucopiae.
51. Felicitas stg. l., holding long vertical caduceus and cornucopiae. *Obv.* reads IMP C CARAVSIUS PF IN AVG.
53. *Obv.* IMP C CARAVSIUS AVG.
54. *Obv.* IMP C CARAVSIUS PIVS FEL AVG.
55. *Obv.* IMP C CARAVSIUS AVG.
56. This coin was not seen in 1984; its description is taken from a MS list in Northampton Museum. The *obv.* is not described.
58. Moneta stg. l., holding scales and cornucopiae.
69. Mars stg. l., r. hand on shield that rests on ground, l. hand holding long vertical spear.
92. Fides stg. l., holding a standard in each hand.
96. *Obv.* IMP C ALLECTVS PF I AVG.
97. *Obv.* IMP C ALLECTVS PF IN AVG.
105. *Obv.* IMP C ALLECTVS P AVG.
106. Salus stg. r., holding snake in arms.

PLATE I

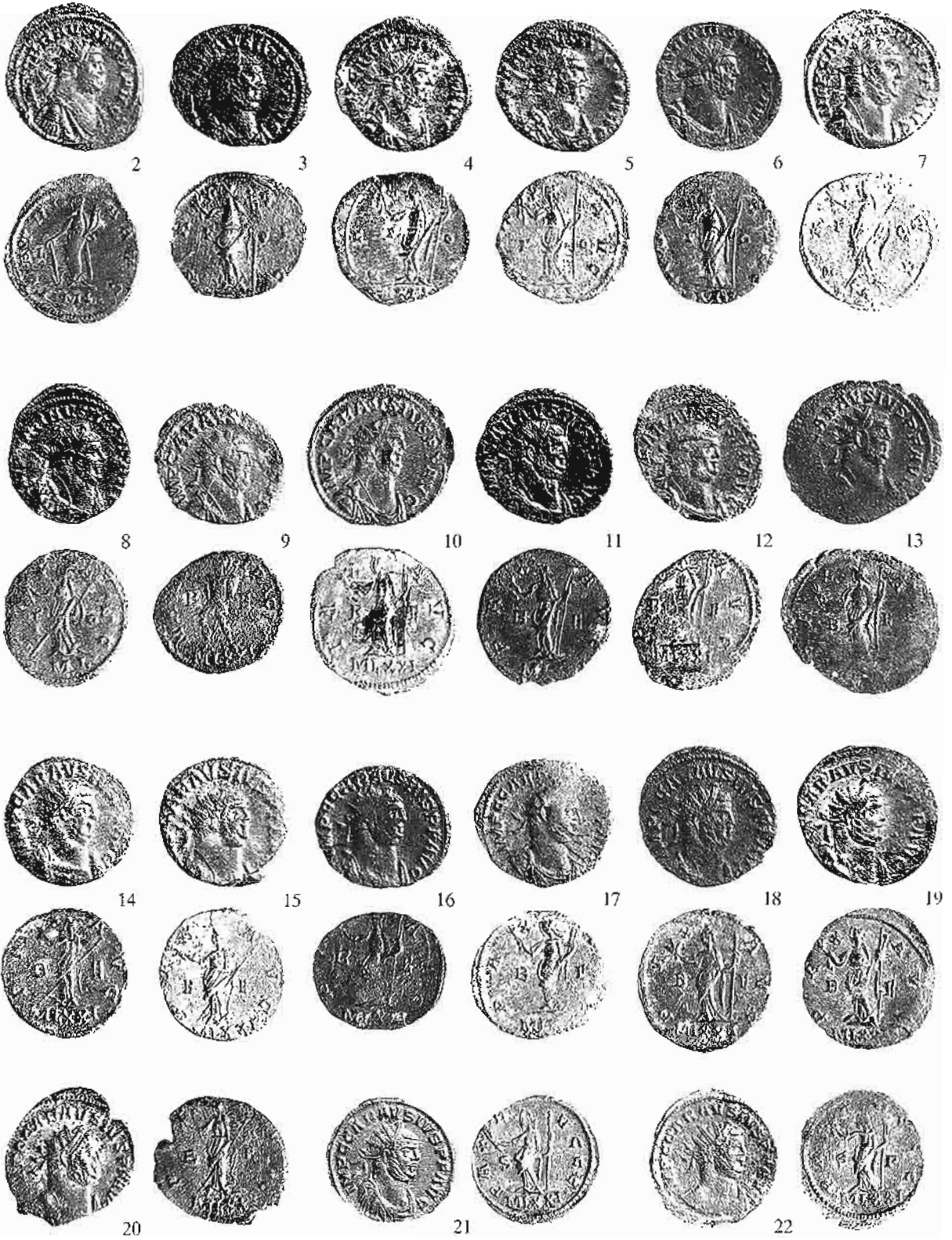


PLATE 2



PLATE 3



PLATE 4



PLATE 5

