

# HOARD REPORTS XVI-XX CENTURIES

by J. P. C. KENT

NEWARK, NOTTS. (CRANKLEY POINT) TREASURE TROVE

*Henry VIII — Charles I*

ON 13 August 1957, a bulldozer driver was excavating earth in a field at Crankley Point Gravel Pit, adjacent to the Great North Road, on the north side of the nearby sugar factory. At a depth of about 8 or 10 feet, he found a brown glazed jug, containing 17 gold and 466 silver coins, the latest of 1642-3. In addition the jug contained: a silver thimble inscribed PHEBE.LOVE., a sealing wax case of white metal possibly silver, with the arms and crest of Vaughan of Sutton-on-Trent, 8 miles north of Newark, a small casket of bronze or brass with traces of champlévé decoration, a bone counter, and the remains of a bead bag. At an Inquest held on 16th September the find was adjudged to be Treasure Trove. It was acquired in its entirety by the Newark Museum.

## LIST OF COINS

*Henry VIII.* Gold Crown (3rd Coinage),  $\Theta$ , Lombardic letters, Whitton var. 1. S.G.  $16.85=82.5\% \pm$  i.e. 20 carats. 42.3 grains. 1.

*Edward VI.* Gold halferown (in name of Henry). E (Southwark mint). Roman letters. S.G.  $17.03=84\% \pm$  i.e. 20 carats. 21.3 grains. 1.

1/- (fine coinage) Tun 1.

6d Tun 3.

*Philip & Mary.* 1/- Spanish titles, 1554, 1.

*Elizabeth I* (169): Quarter sovereign, Key 1 (44.2 grains, S.G.  $17.65=89\%$  i.e. 22 carats).

1/- (63): Lis 1, Crosslet 10, Martlet 9, Bell 5, A 7, Scallop 5, Crescent 3, Hand 3, Tun 4, Woolpack 8, Key 2, 0 1, 1 4, 2 1.

6d. (99): Pheon 1561 8, 1562 2, 1564 1, Portcullis 1566 4, Lion 1566 1, Coronet 1567 2, 1568 7, 1569 11, 1570 1, Castle 1570 4, 1571 1, Ermine 1572 5, 1573 1, Acorn 1574 2, Eglantine 1574 3, 1575 2, 1576 1, 1577 1, Cross 1578 6, 1579 2, 1580 1, Long Cross 1580 4, 1581 3, 1582 7, Bell 1583 (long obv.) 1, Scallop 1585 1, Crescent 1587 (1 rev. over Scallop 1585) 2, Hand 1591 2, 1592 1, Tun 1592 2, 1593 4, Woolpack 1594 2, 1595 1, 1 1601 1, 1602 1, 2 1602 1.

4d. Crosslet 3.

1d. Hand 1, 0 1, uncertain 1.

*James I* (83):

## GOLD

2nd Coinage  $\frac{1}{2}$  unite. Trefoil 1 (74.9 grains, S.G.  $17.66=90\% \pm$  i.e. 22 carats).  $\frac{1}{4}$  unite. Key 1 (35.6 grains).

3rd Coinage  $\frac{1}{2}$  Laurel, Lis 1 (IACOB, 68.6 grains),  $\frac{1}{4}$  Laurel, Lis 1 (full legends, 35.4 grains), Trefoil 1 (full obv. legend, short rev. legend, 34.9 grains).

## SILVER

2/6. 3rd Coinage Lis 1.

1/- (51) 1st Coinage 1st Bust Thistle 5, 2nd Bust Thistle 7, Lis 3, 2nd Coinage 3rd Bust Lis 6, Rose 3, 4th Bust Rose 5, Scallop 2, Grapes 2, Coronet 3, 5th Bust Coronet 5, Mullet 2, 3rd Coinage 6th Bust Rose 2, Lis 2, Trefoil 4,

6d. (25) 1st Coinage 1st Bust Thistle 1603 1, 2nd Bust Thistle 1603 1, Lis 1604 6, 2nd Coinage 3rd Bust Lis 1604 2, Rose 1605 5, 4th Bust Rose 1605 1, 1606 2, Coronet 1608 2, 1609 2, 5th Bust Trefoil 1613 2, 3rd Coinage 6th Bust Lis 1624 1.

*Charles I* (218)

## GOLD

Unite. Castle 1 (140.4 grains), Rose 1 (140.6 grains), Bell 1 (139.2 grains) Crown 1 (140.4 grains).  
 ½ Unite. Triangle in Circle 1 (70.7 grains).  
 Crown. Lis 2 (35.9, 35.5 grains), Castle 1 (33.9 grains), Portcullis 1 (33.8 grains).

## SILVER

2/6 (57): 2a Plumes 2, Rose 2, 2c Harp 1, Portcullis 1, 3a Bell 2, Crown 3, Tun 11, 3a Tun 1, Anchor 3, Triangle (with ground) 4, (no ground) 3, Star (with ground) 2, (no ground) 1, 4 Star 4, 3a Triangle in Circle (obv. over Triangle) 1, 4 Triangle in Circle 16.

1/- (131): 1 Lis 3, Cross on Steps 1, 1a 1, 2a Plumes 3, 3 Harp 3, Portcullis 5, 3a Bell 9, Crown 21, Tun 33, 4 Tun 1, 4 Tun 2, 4 Tun 2, Anchor 5, 4 Anchor 7, 4 Triangle 3, 4 Triangle 9, Star 11, Triangle in Circle 12.

6d. (20): 2a Plumes 1, 3 Portcullis 1, 3a Bell 1, Crown 4, Tun 3, 4 Tun 1, 4 Anchor 6, Triangle 2, 4 Triangle 1,

Id.: 3a uncertain 1.

## CONTINENTAL

Details illegible:— Patagons 2, Half patagons 1, Quarter patagons 2, uncertain penny size silver coin 1.

## UPTON (BERKS.) TREASURE TROVE

*Elizabeth I — Charles I*

During the demolition of an old cottage early in 1960, seven silver coins were found under a beam. The latest dated to about 1638. They were found to be Treasure Trove and were acquired by the Ashmolean Museum, Oxford.

## LIST OF COINS

*Elizabeth I.* 6d. Coronet 1568 1, Ermine 1572 1, Woolpack 1594 2.

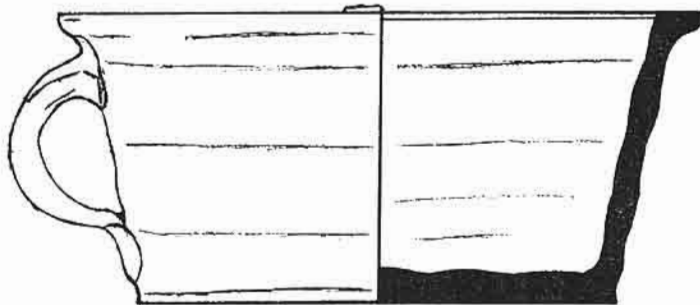
*James I.* 1st Coinage 1/- 2nd Bust, Thistle 1.

*Charles I.* 1/- (2c) Portcullis 1, (3a) Tun 1.

## LYTHAM ST. ANNES (LANCS.) TREASURE TROVE

*Edward VI — Charles I*

On 28th June 1961 a workman uprooting a tree in Beauclerk Gardens, Church Road, St. Annes, discovered a glazed earthenware vessel (fig. 1) containing 7 gold and 376 silver coins, the latest of 1643-4. At an inquest held on 3rd July they were declared Treasure Trove. They were subsequently acquired by the Preston Museum.



Inches

FIG. 1

There is a brown glaze on the inside of the vessel and on the upper surface of the rim. There are occasional spots on the outside of the body.

#### LIST OF COINS

*Edward VI* (3) 1/-: y 1, Tun 1.

6d: Tun 1.

*Mary* (5) 4d.: Pomegranate 5.

*Philip and Mary* (5): 1/-: Spanish title, with XII, 1554 1, English title 1555 1.

4d: Lis 3.

*Elizabeth I* (195) 1/- (70), Lis 1, Crosslet 19, Martlet 11 (2 false), uncertain 1558-61 1, Bell 4, A 4, Scallop 10, Crescent 1, Hand 2, Tun 6, Woolpack 4, Key 3, 1 1, 2 3.

6d. (123). Pheon 1561 10, 1562 4, 1564 4, 1565 1, illegible 1565 1, Rose 1565 2, Portcullis 1566 4, Lion 1566 2, Coronet 1567 10, 1568 7, 1569 4, Castle 1570 2, 1571 1, Ermine 1572 7, 1573 5, 1574 1, Acorn 1573 3, Eglantine 1574 4, 1575 5, 1576 2, 1577 (over 6) 1, Cross 1578 5 (one 8 over 7, Cross over Eglantine), 1579 1, Long Cross 1580 3, 1581 4, Sword 1582 3, Bell 1582 1, (long obv.), 1583 2, (short obv.), A 1583 2, 1584 1, Scallop 1584 2, 1585 1, Crescent 1587 1, 1588 1, 1589 1, Hand 1591 2, (one over 1590), Tun 1592 3, 1593 1, Woolpack 1594 5, 1595 2, Anchor 1599 1, 2 1602 1,

4d. (2). Crosslet 1, illegible 1.

*James I* (74)

ENGLISH (71)

1st Coinage (23) 1/- (17), 1st Bust Thistle 2, 2nd Bust 11, Lis 4.

6d (6), 1st Bust Thistle 1603 1, 2nd Bust 1604 2, Lis 1604 3,

2nd Coinage (35) Double Crown: Trefoil 1.

1/- (24), 3rd Bust Lis 6, Rose 5, 4th Bust Rose 3, Scallop 3, Grapes 2, Coronet 3, Key 1, Tun 1,

6d. (10), 3rd Bust Rose 1605 3, 4th Bust 3, 1606 1, Scallop 1606 1, Coronet 1608 1, Key 1609 1.

3rd Coinage (13) Laurel: Trefoil 2, Half Laurel: Trefoil 1, Quarter Laurel: Trefoil 1.

1/- (6), Thistle 2, Lis 2, Trefoil 2.

6d. (3), Thistle 1622 1, Trefoil 1624 2.

SCOTS (2)

Sword and Sceptre piece: 1602 1.

30/- piece, Scottish arms: 1.

IRISH (1)

1st Coinage, 1/- 1st Bust Bell 1.

*Charles I* (101)

TOWER (98)

Double Crown: Rose 1.

2/6 (22), Castle (1a) 1, Plume (2a) 1, Rose (2a) 1, Harp (2c) 5, Portcullis (2c) 2, Bell (3a) 1, Crown (3a) 1, Tun (3a) 4, Anchor (3a) 1, Star (4) 2, Triangle in Circle (4) 1, (P) (3a) 1, illegible (3a) 1.

1/- (66), Lis (1) 1, Harp (3) 1, Portcullis (3) 4, Bell (3a) 3, (3b) 1, Crown (3a) 10, (3b) 1, Tun (3a) 12, (4) 3, Anchor (4) 7 (one false), Triangle (4) 6, Star (4) 8, Triangle in Circle (4) 8, Forgery (4) but Tun 1.

6d. (9), Harp (3) 2, Crown (3a) 3, Tun (3a) 1, Anchor (4) 1, Triangle (4) 2.

ABERYSTWYTH

4d. Book 1.

YORK

2/6: Lion, round garnished shield, no mint name 1.

SCOTS

30/- piece: Thistle, 1625 issue 1.

#### ATHERSTONE (WARWICKS.) TREASURE TROVE

*Edward VI — Charles I*

On 30 September 1957, while demolishing a house at no. 151, Long Street, Mr N. E. Eaton found among the rubble of the rear of the upper floor a blue calico bag, tied at the top with a knot. It contained 184 silver coins, the latest dating to about 1644. The coins were in very poor condition. They were declared Treasure Trove at an Inquest held on 10 October 1957, and were all acquired by the Warwick Museum together with the bag.

## LIST OF COINS

*Edward VI* 6d. Tun 1.

*Mary* 4d. Pomegranate 22.

*Philip and Mary* 4d. Lis 2.

*Elizabeth I* (54) 1/- (19). Crosslet 2, Martlet 4, A 1, Scallop 5, Crescent 1, Hand 1, Tun 1, Woolpack 3, 1 1.

6d. (25) Pheon 1562 1, 1565 1, Coronet 1567 3, 1568 1, Castle 1571 1, Ermine 1572 2, Acorn 1573 1, Eglantine 1574 2, 1575 1, Long Cross 1580 1, 1581 1, 1582 1, Bell 1583 1 (short obv.), A 1584 1, Scallop 1585 1, 1587 1, Hand 1591 1, Tun 1593 1, Woolpack 1594 1, 1 1601 1, 2 1602 1.

4d. (10) Crosslet 8, Martlet 2.

*James I* (28)

ENGLISH (24)

1/- (21) 1st Coinage 1st Bust Thistle 1, 2nd Bust Thistle 3, Lis 1; 2nd Coinage 3rd Bust Lis 4, Rose 1, 4th Bust Rose 2, Scallop 4, 5th Bust Coronet 1, Key 1, Mullet 1, 3rd Coinage 6th Bust Thistle 1, Lis 1.

6d. (3) 1st Coinage 2nd Bust Thistle 1603 1; 2nd Coinage 3rd Bust Lis 1604 2.

SCOTS

30/- English arms 1, Scottish arms 1.

IRISH

1/- Cinquefoil 2.

*Charles I* (77)

ENGLISH (76)

2/6 (34). (2c) Portcullis 1, (3a) Bell 2, (3a) Anchor 2, Triangle (with ground) 4, (4) Triangle in Circle 11. (3a<sup>3</sup>) (r) 4, (r) 6, Eye 4.

1/- (39). (3) Harp 3, (3a) Crown 4, Tun 4, (4) Tun 1, Anchor 1, Triangle 1, (4) Triangle 2, Star 5, Triangle in Circle 13 (r) 5.

6d. (3). (3a) Bell 1, Crown 1, Tun 1.

SCOTS

12/- 1st Issue, Thistle 1.

## STANTON-BY-LANGWORTH (LINCS.) TREASURE TROVE

*Edward VI — Commonwealth*

Between 19 April and 15 May 1962, while levelling the spoil from a newly dug ditch in 'The Meadow' field (no. 59 on the O. S. map), Mr J. W. Bee found 660 silver coins, the latest dated 1656. At an Inquest held on 29 May 1962 the find was declared Treasure Trove. It was acquired *in toto* by the Lincoln Museum.

## LIST OF COINS

*Edward VI*: 6d. Tun 1.

*Philip & Mary*: 1/- Spanish titles, date 15 //// above heads, XII above shield 1.

*Elizabeth I* (228) 1/- (58): Crosslet 11, Martlet 8, Bell 3, A 5, Scallop 8, Hand 2, Tun 11, Woolpack 3, Key 4, 2 3.

6d. (170): Pheon 1561 9, 1562 4, 1564 2, 1565 2, 1566// 1, Rose 1565 4, Portcullis 1566 7, Lion 1566 1, 1567 1, Coronet 1567 6, 1568 17, 1569 6, 1570 2, Castle 1570 1, 1571 7, Ermine 1572 14, 1573 4, Acorn 1573 4, 1574 2, Eglantine 1574 1, 1, 1575 6, 1576 1, Cross 1578 7, 1579 1, Long Cross 1580 6, 1581 2, Sword 1582 4, Bell 1582 (long obv. leg.) 2, (short obv. leg.) 1, 1583 3, A 1584 2, Scallop 1585 2, 1588// 1, Crescent 1587 2, 1588 1, 1589 1, Hand 1590 5, 1591 1, Tun 1592 6, 1593 6, 1594 3, Woolpack 1594 1, Key 1595 1, 1596 2, 1597 1, 1 1601 2, 1602 2, 2 1602 2, illegible 1561-82 1.

*James I* (81)

ENGLISH (79)

1/- (57): 1st Coinage 2nd Bust Thistle 6, Lis 8, 2nd Coinage 3rd Bust Lis 14, Rose 4, 4th Bust Rose 6, Grapes 1, Scallop 3, Coronet 2, 5th Bust Coronet 3, Key 1, Cinquefoil 1, Tun 1, 3rd Coinage 6th Bust Thistle 3, Lis 2, Trefoil 2.

6d. (22): 1st Coinage 1st Bust Thistle 1603 4, 2nd Bust Thistle 1603 1, 1604 1, Lis 1604 3, 2nd Coinage 3rd Bust Lis 1604 4, 1605 1, Rose 1605 2, 4th Bust Rose 1606 1, Scallop 1606 3, 3rd Coinage 6th Bust Thistle 1622 1, Lis 1623 1.

SCOTS (2)

30/- English arms 1, 12/- Scottish arms 2.

*Charles I* (336)

## TOWER MINT (332)

2/6 (92); 2a Plumes 2, 2b Rose 1, 2c Harp 2, Portcullis 1, 3a Bell 5, Crown 5, Tun 6, 3a Anchor 3, Triangle (with ground) 2, (no ground) 2, 4 Star 3, Triangle in Circle 19, 3a (P) 10, (R) 11, Eye 4, Sun 8, 5 Sun 4, Sceptre 3, 3a uncertain 1.

1/- (221); 1 Cross on Steps 1, 2a Plumes 1, Rose 1, 3 Harp 3, Portcullis 4, 3a Bell 5, Crown 15, 3b Crown 2, 3a Tun 21, 3b Tun 1, 4 Tun 2, 4 Tun 2, 4 Tun 4, (1 false), Anchor 10, Triangle (later rev.) 3, 4 (early rev.) 1, (later rev.) 15, Star 18, (one obv. over Triangle, one rev. over Triangle), Triangle in Circle 43, (P) 24, (R) 20, (P) or (R) 6, Eye 4, Sun 8, 4 Sun 2, 4 uncertain 5.

6d. (19); la Castle 1628 1, 2a Plumes 1, 3a Bell 1, Crown 4, Tun 4, 4 Tun 1, Anchor 2, 4 Anchor 1, Triangle (early rev.) 1, 4 Triangle (later rev.) 1, Star 1, Triangle in Circle 1.

## PROVINCIAL MINTS

Aberystwyth 6d Book 1, Oxford 1/- 1643 1, 1644 1, Truro/Exeter 2/6 undated, Rose mm. 1.

*Commonwealth* (13) 2/6; 1654 1, 1656 1, 1/- 1653 5, 1654 1, 1656 5.

## LAUGHTON (SUSSEX) TREASURE TROVE

*Philip & Mary — Commonwealth*

On 2 April 1959, Mr Graham Bird was working in field no. 39, Park Farm, when he unearthed 524 silver coins, the latest dated 1656, and the remains of a Bellarmine-type stoneware jar. At an Inquest on 21 April 1959, the find was declared Treasure Trove. It was acquired in its entirety by the Lewes Museum.

Hoards of the Commonwealth period are not common, and the presence of five provincial issues of Charles I raised an interesting problem. The Chester piece showed a very marked amount of verdigris corrosion, suggesting that its fineness was below that of the regular coinage. The poor representation of Charles's provincial coins has long been recognised as characteristic of Civil War hoards, and it may be that some of them laboured under a not unjustified suspicion of being slightly base.

*Philip and Mary*. 1/-: English titles only, no date visible 1.

*Elizabeth I* (16) 1/-: Martlet 2, Crescent 1, Tun 1.

6d. Pheon 1561 1, 1562 1, 1564 1, 156/// 1, Coronet 1568 1, Castle 1571 1, Ermine 1572 2, 1573 1, Eglantine 1575 1, Long Cross 1580 1, Crescent 1588 1.

*James I* (6) 2nd Coinage 6d. 4th Bust Rose 1605 1.

3rd Coinage 2/6 Trefoil 1.

Scots 30/- English arms 2, Scottish arms 2.

*Charles I* (453)

## TOWER MINT (448)

2/6 (438): 2c Harp 4, Portcullis 8, 3a Bell 15, Crown 8, Tun 21, 3b Crown 2, 3a Tun 2, Anchor 6, Triangle (no ground) 7, (with ground) 12, Star (over Triangle obv. no ground) 1, (over Triangle obv. with ground) 1, 4 Star 23, Triangle in Circle 113, 3a (P) 41, (R) 63, (P) or (R) 13, Eye 20, Sun 52, 5 Sun 23, Sceptre 3.

1/- (9): 3a Crown 1, 4 Anchor 1, 4 Triangle 1, Star 2, Triangle in Circle 2, (P) 1, Sun 1.

6d. 3a Triangle 1.

## PROVINCIAL MINTS (all 2/6)

Oxford 1642 1, Exeter: Rose mm., no date, but obv. die used with dated rev. of 1644 1, Cheters (Shield type) CHST 1, Worcester 1, Uncertain mint, pierced cinquefoil mm. on rev. 1.

*Commonwealth* (48) 2/6; 1652 2, 1653 32, 1654 8, 1656 5, 165/// 1.

CLEASBY (YORKS., N.R.) TREASURE TROVE  
*Charles II — William III*

At an Inquest held on 5th November 1957, fifteen silver crowns and half crowns, the latest dated 1699, found by Thomas Gowton, were declared to be Treasure Trove. They were returned to the finder. All were in extremely poor condition, and it is likely that they were not deposited until well into the 18th century.

## LIST OF COINS

## LONDON MINT

*Charles II.* 2/6: 1672 (472) **1** (227·2), 1677 (479) **2** (221·6, 224·7), 1679 (481) **1** (216·6).

*James II.* 2/6: 1688 (502) **1** (226·8).

*William III.* 5/-: 1696 (89) **1** (457·9).

2/6: 1697 (541) **6** (221·4, 224·6, 225·3, 226·2, 226·2, 226·9), 1698 (554) **1** (226·1), 1699 (556) **1** (221·4).

## BRISTOL MINT

*William III.* 2/6: 1697 (543) **1** (220·3).

Italicized numbers in brackets refer to Spink's *Milled Coinage of England*. Weights are in grains.

RAMSGATE (KENT) TREASURE TROVE  
*George III — Victoria*

On 10 April 1962, John Clarke, while working on the site on which no. 2, Cribbs Cottages, Newcastle Hill formerly stood, found 615 sovereigns and 116 half sovereigns dating between 1817 and 1850. At an Inquest held on 25 May 1962 the find was declared Treasure Trove. Four coins, marked in the list by an asterisk, were acquired by the British Museum, the remainder sold to the trade.

Great rarities in the find included a George IV sovereign of 1828, Victoria sovereigns of 1841 and 1843 (narrow shield type), and the hitherto unpublished half sovereign of 1850, the latest coin in the find. The coins showed a normal gradation of wear from earliest to latest, the earliest being much worn. A check on the 98 sovereigns struck before 1831 revealed however that much of the 'wear' was due to the superficial redistribution of metal rather than to actual loss of weight. They gave a norm of 122·2 grains as opposed to one of 122·9 grains for 75 sovereigns struck between 1845 and 1849, and virtually unworn. Interestingly, these recent issues were themselves appreciably lighter than the standard 123·274 grains, and this gives rise to the suspicion that the age-old practice of 'culling' full weight pieces was still current.

Numbers of coins present in the hoard are followed in the ensuing list by a bracketed figure, showing the number of coins struck in the year to the nearest 0·1 million.

## LIST OF COINS

*George III* (3): Sovereigns; 1817 **1** (3·2), 1820 **2** (0·9).

*George IV* (98): Sovereigns (95): Type 1 (21) 1821 **15** (9·4), 1822 **5** (5·4), 1823 **1** (0·6), Type 2 (74) 1825 **12** (4·2), 1826 **23** (5·7), 1827 **14** (2·3), 1828 **1\*** (0·4), 1829 **13** (2·4), 1830 **11** (2·4).

Half sovereigns; Type 1, 2nd Reverse: 1825 **2** (0·8), Type 2: 1828 **1** (1·2).

*William IV* (149): Sovereigns (148); 1831 **14** (0·6), 1832 **39** (3·7), 1833 **17** (1·2), 1835 **15** (0·7), 1836 **27** (1·7), 1837 **36** (1·2).

Half sovereign; 1837 **1** (0·2).

*Victoria* (471): Sovereigns (369); 1838 **51** (2·7), 1839 **11** (0·5), 1841 **2** (1\*) (0·1), 1842 **94** (4·9), 1843 normal type **89**, thin shield **1** (6·0), 1844 **36** (3·0), 1845 **26** (3·8), 1846 **23** (3·8), 1847 **27** (4·7), 1848 **7** (2·2), 1849 **2** (1·8).

Half sovereigns (112); 1838 **2** (0·3), 1841 **16** (0·5), 1842 **56** (2·2), 1843 **7** (1·3), 1844 **17** (1·1), 1845 **3** (1\*) (0·9), 1846 **3** (1·1), 1847 **2** (1·0), 1848 **3** (0·4), 1849 **2** (0·8), 1850 **1\*** (0·2).

## ST. PANCRAS (LONDON, N.W.3) TREASURE TROVE

*Victoria*

On 31 January 1963, Mr George Williams, while clearing a building site at no. 3, Maitland Park Road, found, in ground disturbed by a machine, 62 sovereigns of Victoria, dating between 1850 and 1875. At an Inquest held on 21 February, they were declared Treasure Trove. Five, marked by an asterisk in the list below, were acquired by the British Museum, the rest were sold to the trade.

## LIST OF COINS

*London Mint.* Shield type, raised ww: 1850 1, 1853 1.

Shield type, incuse ww: 1854 1, 1856 2, 1861 1, 1863 1. as last, but with rev. die number: 1863 (die 2) 1, 1865 (die 32) 1, 1866 (die 77) 1, 1868 (die 33) 1, (die 6) 1 as last, but raised ww and rev. die number: 1870 (die 114) 1\*.

George & Dragon type, raised ww: 1871 (large BP) 1\*, (small BP) 3, 1872 6.

Shield type, raised ww, no die number: 1872 2. as last, but with rev. die number: 1872 (die 3) 1, (die 5) 1, (die 24) 1, (die 29) 1, (die 52) 1, (die 80) 1, (die 87) 1, (die 98) 1, 1873 (die 10) 1.

*Melbourne mint.* George & Dragon type, raised ww: 1875 1.

*Sydney mint.* Australian type: 1863 1, 1867 1, 1868 1, 1870 2.

Shield type, incuse ww: 1871 1.

George & Dragon type: 1871 1\*, 1873 1\*, 1874 1, 1875 7 (1\*).

Shield type, raised ww: 1875 10.

## SETTLE (YORKS. W.R.) TREASURE TROVE

*Victoria*

On 14 November 1958, Mr G. Richards was demolishing a wall at Settle when he saw some objects which he took to be rusty washers. He left them lying in rubble on the footpath, where, later the same day, Mrs G. Lawson picked them up and recognised them to be four gold sovereigns of Victoria, the latest dated 1879. At a subsequent Inquest, the find was declared Treasure Trove. The coins were sold to official bullion dealers.

## LIST OF COINS

*London mint.* Shield type, incuse ww: 1860 1.

George & Dragon type: 1872 1.

*Melbourne mint.* George & Dragon type: 1878 1, 1879 1.

## DUNKERTON (SOMERSET) TREASURE TROVE

*George III — Victoria*

On 1 March 1958, while playing in an old public house known as 'The Boatman's Arms', C. Talbot climbed through an opening in the ceiling of a top floor room into an attic. There he found on the floor a piece of rag, perhaps an old handkerchief, containing 164 silver coins. Their dates ranged between 1817 and 1886. At an Inquest held on 29 April the coins were declared Treasure Trove. They were subsequently returned to the finder.

## LIST OF COINS

*George III.* Last coinage. 2/6 Type A. 1817 1, 181-1. Type B. 1819 1; 18--2.

*George IV.* 2/6d. Type A. 1820 1.

*William IV.* 6d. 1831 1; 1834 1; 183-1.

*Victoria* 2/6d. Type A<sup>4</sup>. 1844 1; A<sup>5</sup> 1877 1; 1881 1; 1883 1; 1884 1.

2/-. 'Gothic', BRIT (Type B<sup>1</sup>) 1852 2; 1853 4; 1855 1; 1856 1; 1857 1; 1858 1; 1859 (ix) 1 (ix.) 1. B<sup>2</sup> 1865 (xv) die 26 1; die 32 1. BRIT (B<sup>3</sup>) 1871 die 53 1; 1872 die 57 1; die 133 1; 1873 die 69 1; die 145 1; die 212 1; 1874 die 99 1. B<sup>5</sup> 1878 die 31 1. B<sup>7</sup> 1879 1. B<sup>8</sup> 1880 2; 1884 1.

1/-. Type A<sup>3</sup> 1842 1; 1844 1; 1845 2; 1846 1; 1852 1; 1853 3; 1855 1; 1856 1; 1857 2; 1858 1; 1859 2; 1860 1. Type A<sup>4</sup> 1865 die 30 1; die 80 1; die 88 1; die 109 1; die 118 1; 1866 die 59 1. A<sup>6</sup> 1868 die 44 1;



1870 die 2 1; 1872 die 69 1; die 120 1; die 123 1; 1874 die 17 1; die 30 1; 1875 die 40 1. A<sup>7</sup>1880 1; 1883 2; 1884 2. Uncertain type and illegible date 1.

6d. Type A<sup>1</sup> 1840 1; 1842 1; 1845 1; 1850 1; 1851 3; 1856 2; 1857 1; 1858 2; 1859 1; 1860 3; 1862 1. A<sup>2</sup> 1864 die 29 1; 1866 die 5 1; die 36 2; die 53 1; die 58 1. A<sup>3</sup> 1867 die 11 1; 1868 die 2 1; 1869 die 8 1; 1871 die 13 1; die 18 1; die 23 1; die 54 1; no die no. (4<sup>4</sup>) 1; 1872 die 18 1; die 23 1; 1873 die 1 1; die 114 1; 1874 die 3 1; die 10 1; die 21 1; die 27 1; 1875 die 12 1; die 54 1; die 69 1; die 70 1; 1877 die 1 1; die 34 1; no die no. (A<sup>4</sup>) 4; 1878 die 53 1. A<sup>4</sup> 1879 2. A<sup>5</sup> 1880 4; 1881 10; 1882 3; 1883 5; 1884 3; 1885 2. Uncertain type and illegible date 6.

3d. Type A 1886 1.

Uncertain 1/- . . . . 1.

### FAREHAM (HANTS.) TREASURE TROVE

#### *Victoria — George V*

On 2 October 1959, while excavating and tree felling were in progress on the Maylings Farm Estate, Mr. G. Rice found 254 silver coins, the latest dated 1920. At an Inquest held on 1 December they were found to be Treasure Trove. They were subsequently returned to the finder.

#### LIST OF COINS

*Victoria* (76) 2/6. Young head 1845 1, 1874 1, 1881 1, 1882 1, 1883 3, 1886 1, 188// 1. Jubilee 1888 1, 1890 1, 1892 1. Old Head 1894 2, 1895 1, 1896 1, 1898 1, 1899 2, 1900 2.

2/-. Gothic 1870 (die 11) 1, 1872 (die 93) 1, 1873 (dies 105, 118, 230) 3, 1876 (die 49) 1, 1880 1, 1883 2, 1884 1, 1886 1, 18// 1, Jubilee 1887 1, 1889 1. Old Head 1894 2, 1895 1, 1896 3, 1897 1, 1898 1, 1899 2, 1900 2.

1/-. Young head 1853 1, 1868 (die 28) 1, 1870 (die ?) 1, 1871 (dies 11,13) 2, 1872 (dies 6, 88) 2, 1873 (dies 19, 130) 2, 1875 (die 70) 1, 1883 1, 1884 1, 1886 2, 18// 2. Jubilee 1887 1, 1891 1, 1892 1. Old head 1893 1, 1896 2, 1987 3, 1899 2, 1901 1.

6d. Old Head 1893 1.

*Edward VII* (18) 2/6. 1902 1, 1907 2, 1908 1, 1910 1.

2/-. 1902 1, 1907 1, 1909 1.

1/-. 1905 1, 1906 1, 1907 3, 1908 1, 1910 4.

*George V* (160) 2/6. 1911 1, 1912 2, 1913 3, 1914 9, 1915 20, 1916 26, 1917 10, 1918 15, 1919 3.

2/-. 1912 1, 1913 5, 1914 5, 1915 6, 1916 7, 1917 3, 1918 9, 1919 1, 1920 1.

1/- 1911 3, 1912 1, 1913 1, 1914 5, 1915 11, 1916 4, 1917 3, 1918 5.

### BROMLEY (KENT) TREASURE TROVE

#### *George V — George VI*

On 23 October 1966, Miss R. Carr found 299 silver coins in the back garden of no. 36, Rafford Way. The latest was dated 1941. At an Inquest held on 25 November they were declared Treasure Trove, and in accordance with the Bank of England's requirements they were withdrawn from currency.

#### LIST OF COINS

*George V* 2/6. 1920 15, 1921 17, 1922 7, 1923 7, 1926 1, 1927 5, 1928 9, 1929 12, 1931 10, 1932 5, 1933 13, 1934 4, 1935 8, 1936 7.

2/-. 1916 1, 1919 1, 1920 5, 1921 9, 1922 4, 1923 5, 1924 3, 1926 2, 1928 4, 1929 4, 1930 2, 1933 8, 1935 5, 1936 8.

1/-. 1924 1.

6d. 1921 1, 1922 1, 1923 1, 1924 1, 1929 1, 1930 1, 1933 1, 1934 1.

*George VI* 2/6. 1937 6, 1938 4, 1939 20, 1940 21, 1941 18.

2/-. 1937 6, 1938 3, 1939 8, 1940 14, 1941 6.

1/-. none.

6d. 1939 1, 1940 2.