

## CONTENTS

THE COINS OF EADMUND'S MONEYERS, FARAMAN AND INGELGAR, <i>by</i> H. ALEXANDER PARSONS . . . . .	1
THE STAMFORD AND PETERBOROUGH MINTS; PART II, <i>by</i> WILLIAM C. WELLS . . . . .	7
LONG-CROSS COINS OF DURHAM, <i>by</i> L. A. LAWRENCE, F.S.A. . . . .	29
DIES IN THE PUBLIC RECORD OFFICE, <i>by</i> DEREK ALLEN . . . . .	31
THE FIRST ISSUE OF DAVID II, <i>by</i> H. J. DAKERS . . . . .	51
THE HEAVY COINAGE OF HENRY VI; PART I, <i>by</i> C. A. WHITTON . . . . .	59
AN OXFORD HOARD OF THE TIME OF THE CIVIL WARS, <i>by</i> ANTHONY THOMPSON . . . . .	91
THE 'WEYMOUTH' AND 'SALISBURY' MINTS OF CHARLES I, <i>by</i> DEREK ALLEN . . . . .	97
BRITISH MEDALS SINCE 1760 ( <i>continued</i> ), <i>by</i> COL. M. H. GRANT . . . . .	119
MISCELLANEA . . . . .	153
REVIEWS . . . . .	163
OBITUARY . . . . .	169
PROCEEDINGS OF THE SOCIETY, 1938 . . . . .	171
LIST OF MEMBERS AT 30 NOVEMBER 1938 . . . . .	193
<b>LUNDE</b> or <b>LUNDE CIVITAS</b> , <i>by</i> L. A. LAWRENCE, F.R.C.S., F.S.A. . . . .	201
THE HEAVY COINAGE OF HENRY VI; PART II, <i>by</i> C. A. WHITTON . . . . .	206
TREASURE TROVE 1933-9, <i>by</i> DEREK ALLEN . . . . .	269
CROSSES AND CROWNS, <i>by</i> D. F. ALLEN AND W. R. DUNSTAN . . . . .	287
SUSSEX SEVENTEENTH-CENTURY TOKENS, <i>by</i> J. B. CALDECOTT, F.S.A. . . . .	301
BRITISH MEDALS SINCE 1760 ( <i>continued</i> ), <i>by</i> COL. M. H. GRANT . . . . .	321
MISCELLANEA . . . . .	363
OBITUARY . . . . .	365
PROCEEDINGS OF THE SOCIETY 1939 . . . . .	367
LIST OF MEMBERS AT 30 NOVEMBER 1939 . . . . .	387

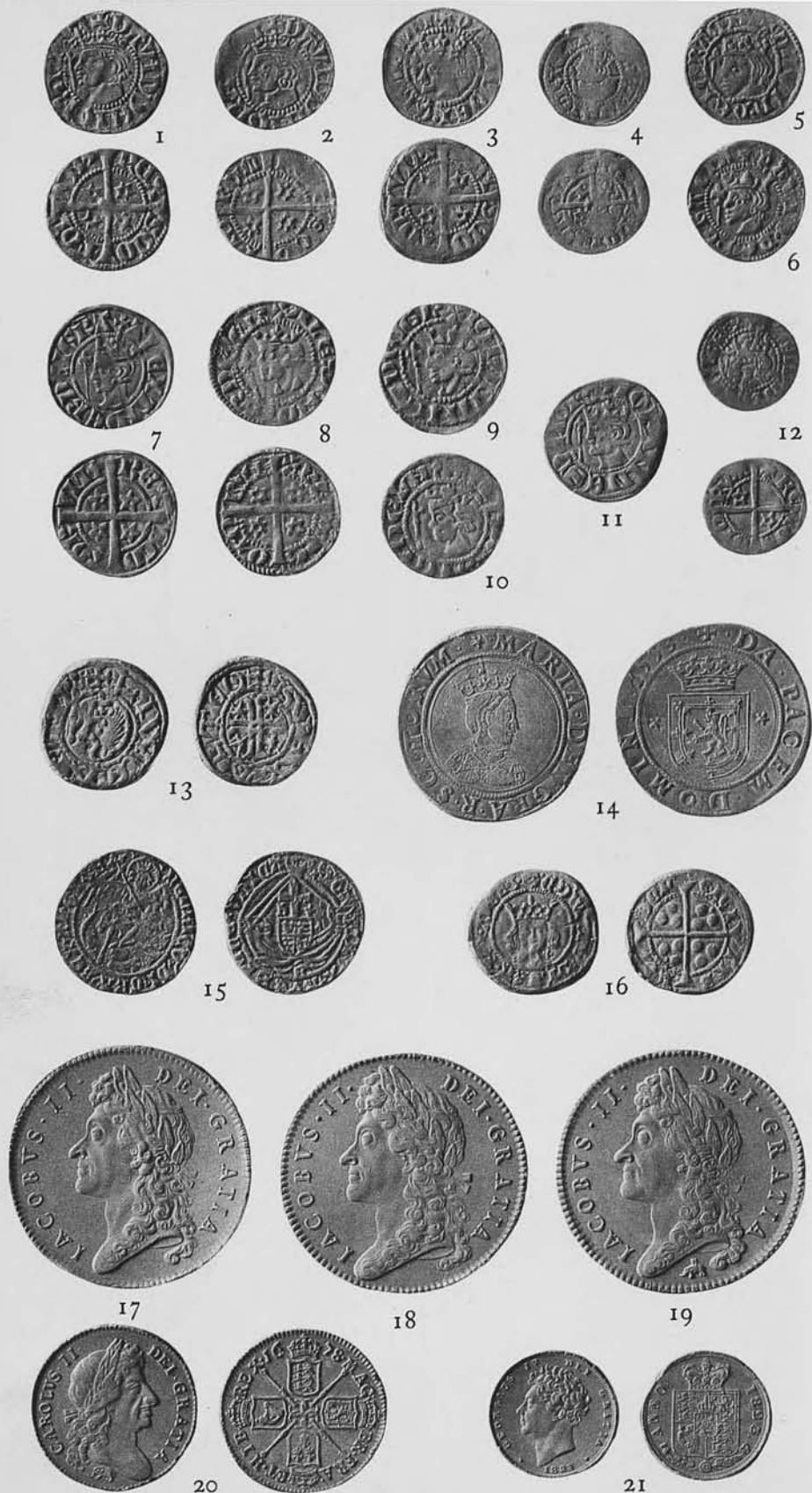
LA CIRCULATION DES MONNAIES D'OR MÉROVINGIENNES EN ANGLETERRE, <i>par</i> P. LE GENTILHOMME . . . . .	
THE HEAVY COINAGE OF HENRY VI; PART III, <i>by</i> C. A. WHITTON	
WARRANTS AND SKETCHES OF THOMAS SIMON, <i>by</i> DEREK ALLEN . . . . .	
BRITISH MEDALS SINCE 1760 ( <i>continued</i> ), <i>by</i> COL. M. H. GRANT . . . . .	
PROCEEDINGS OF THE SOCIETY, 1940 . . . . .	



LIST OF PLATES

1	Plate I. General view of the site.
2	Plate II. Plan of the site.
3	Plate III. Section through the site.
4	Plate IV. Plan of the site.
5	Plate V. Section through the site.
6	Plate VI. Plan of the site.
7	Plate VII. Section through the site.
8	Plate VIII. Plan of the site.
9	Plate IX. Section through the site.
10	Plate X. Plan of the site.
11	Plate XI. Section through the site.
12	Plate XII. Plan of the site.
13	Plate XIII. Section through the site.
14	Plate XIV. Plan of the site.
15	Plate XV. Section through the site.
16	Plate XVI. Plan of the site.
17	Plate XVII. Section through the site.
18	Plate XVIII. Plan of the site.
19	Plate XIX. Section through the site.
20	Plate XX. Plan of the site.
21	Plate XXI. Section through the site.
22	Plate XXII. Plan of the site.
23	Plate XXIII. Section through the site.
24	Plate XXIV. Plan of the site.
25	Plate XXV. Section through the site.
26	Plate XXVI. Plan of the site.
27	Plate XXVII. Section through the site.
28	Plate XXVIII. Plan of the site.
29	Plate XXIX. Section through the site.
30	Plate XXX. Plan of the site.





COINS OF DAVID II AND MISCELLANEA