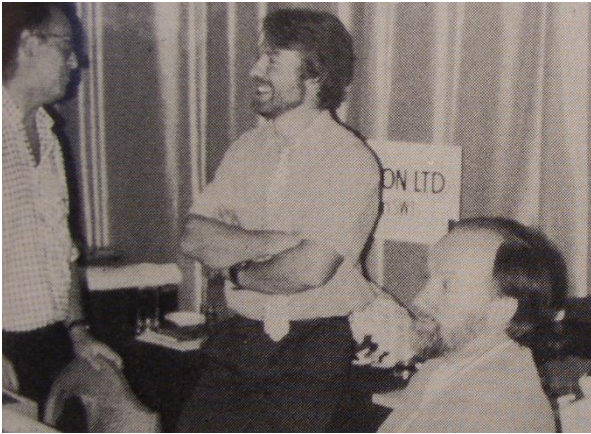


# Finn, Patrick

(1942-2000)



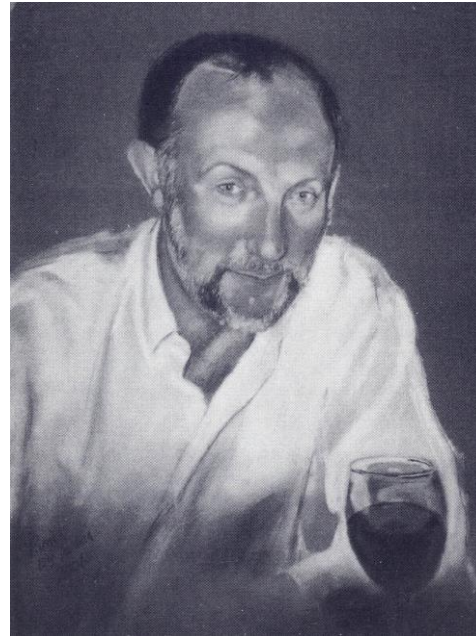
Andre de Clermont, Mark Rasmussen and Patrick Finn – Coin News - 1990-Nov-25.



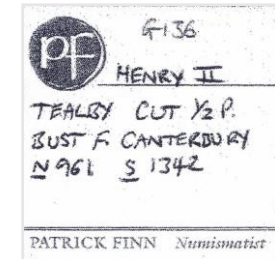
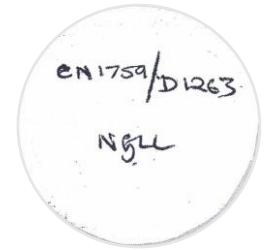
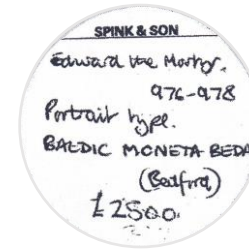
Coin News - 1998-Jul-56.



With John Kent - BM



© P. Finn, Memorial List, 2001.



## Biographical and Other Notes

Joined the BM Department of Coins and Medals in 1960. Joined Spink in 1965, specializing in Hammered coinage. Succeeded Douglas Liddell as head of coins in 1967. Set up his own business in 1993, based in Cumbria.

## Sources and References

HEM Encyclopædia 2 – Numismatic.  
HEM Encyclopædia 3 – Books.  
HEM Encyclopædia 4 – Biographical.  
P. Mitchell, 'Obituaries: Patrick Finn (1942-2000)' BNJ vol. 70 (2000), 181-82.  
Coin News  
1990-Nov-25, 1984-Jun-53, 1993-Jul-26, 1998-Jul-56