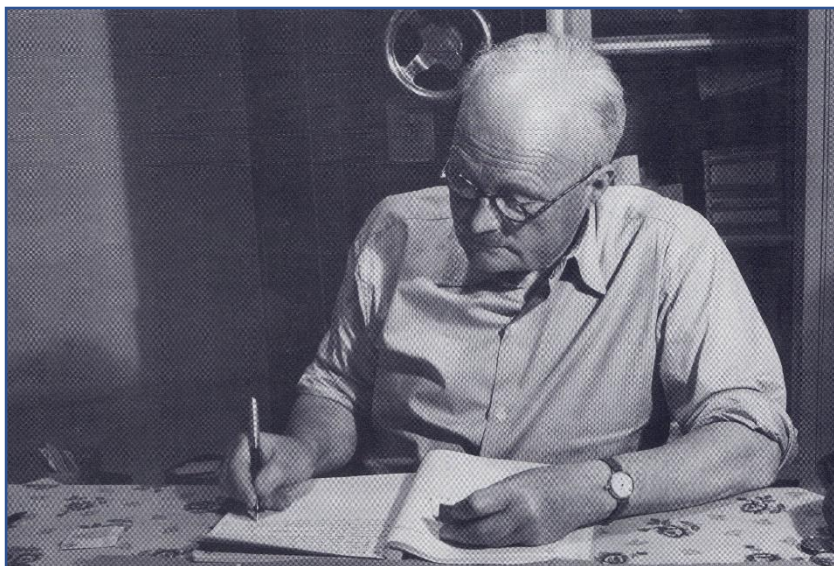


Baldwin, Albert Henry Frederick ('Fred')

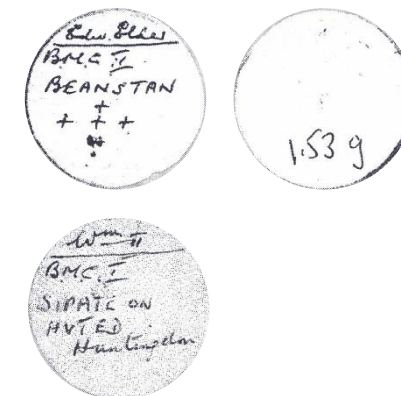
(1889-1970)



Picture thanks to Douglas Saville



At home in Richmond
Photo thanks to David Young



Biographical and Other Notes

Second son of founder A.H. Baldwin, joined the business in 1905. Ran the company 1930s - 1967.

Sources and References

HEM Encyclopædia 4 – Biographical
RJE et al. Hammered Tickets – BNJ 2001.
E. J. W[instanley], 'Obituaries: A. H. F. Baldwin' BNJ vol. 39 (1970), 186-87, pls.